

# Missouri River

Missouri National Recreational River



# Junior Ranger Activity Book



Explore the  
“Big Muddy”

# To earn your Junior Ranger Badge

## You will need:

- This activity book
- A pen or pencil
- A visitor center activity sheet
- A park brochure and map
- and
- An adult to take you to the sites and enjoy the activities with you



1. Complete a Discovery Trail, Adventure Trail, or Explorers' Trail Activity sheet at the Lewis & Clark Visitor Center and keep it to turn in with this book.
2. Read about the park and have some fun with maps! Use the park brochure to identify the park sites on the next pages.
3. Complete the **National Park Service** pages in this book – discover how many different National Parks there are and what rangers do.

Program \_\_\_\_\_

Ranger \_\_\_\_\_ Date \_\_\_\_\_

4. Visit **6** of these sites and complete the activities in this book for each one you visit.

- Fort Randall Overlook
- Yankton Sioux Treaty Monument
- Niobrara State Park (state park fees apply)
- Chief Standing Bear Bridge Overlook
- Gavins Point Dam Overlook
- Ponca State Park (state park fees apply)
- Mulberry Bend Overlook
- Spirit Mound Historic Prairie
- Yankton's Riverside Park
- Corps of Discovery Welcome Center

You can also attend a ranger program and visit only **5** sites. Have the ranger sign this page.

Bring your completed booklet back to a National Park Ranger at the Lewis & Clark Visitor Center, or mail it to:

Junior Ranger Program  
Missouri National Recreational River  
PO Box 666  
Yankton SD 57078

Junior Ranger Candidate:

Name \_\_\_\_\_

Address \_\_\_\_\_

City \_\_\_\_\_ State \_\_\_\_\_ Zip \_\_\_\_\_



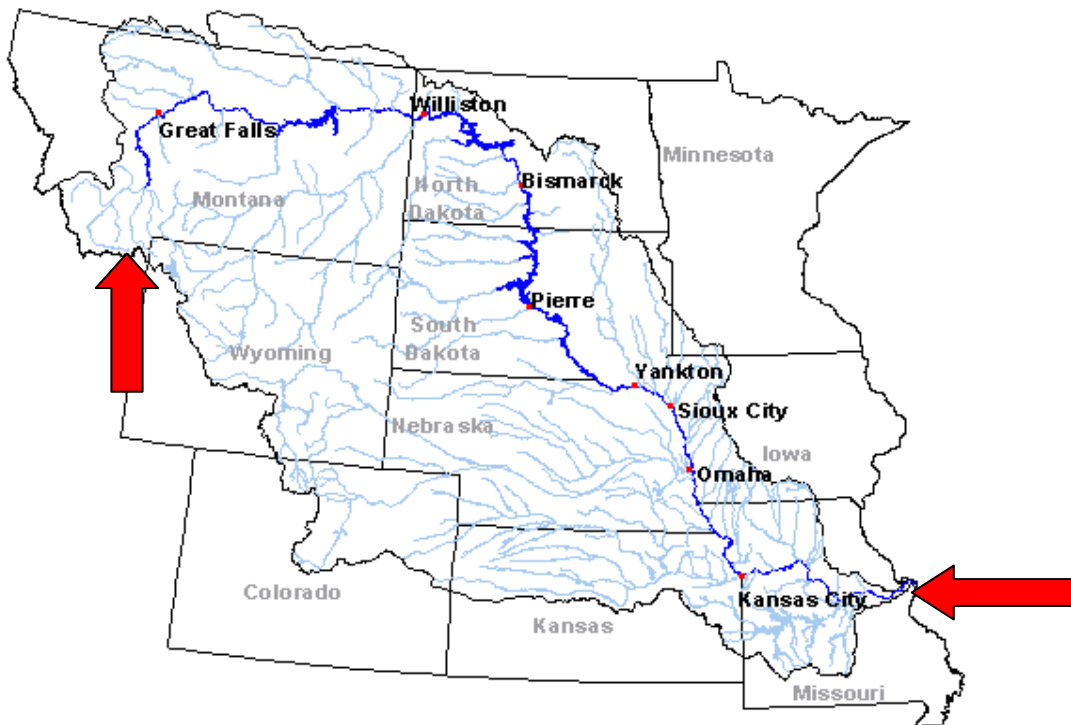
Questions or Comments? Write us at the above address or call 402-667-2550  
[www.nps.gov/mnrr](http://www.nps.gov/mnrr)

# Missouri River

Missouri National Recreational River



**Missouri National Recreational River!** Wow! That's a long name for a park. But it's a very long park on a very long river! Did you know that the Missouri River measures over 2600 miles from its source in the mountains of Montana to St. Louis? That's longer than the distance from New York City to Los Angeles!



For many years, people have tried to tame the Missouri; part of it has been narrowed and deepened to carry barges, and part of it is backed up behind six big dams. Only one-third of the Missouri is still really a river, so Congress decided that some of it should be protected as one of America's Wild and Scenic Rivers. Our congressional representatives gave 98 miles of the Missouri that long name and put the National Park Service in charge of it. The National Park Service manages and protects the Missouri River with the help of many other departments of our state and federal governments.

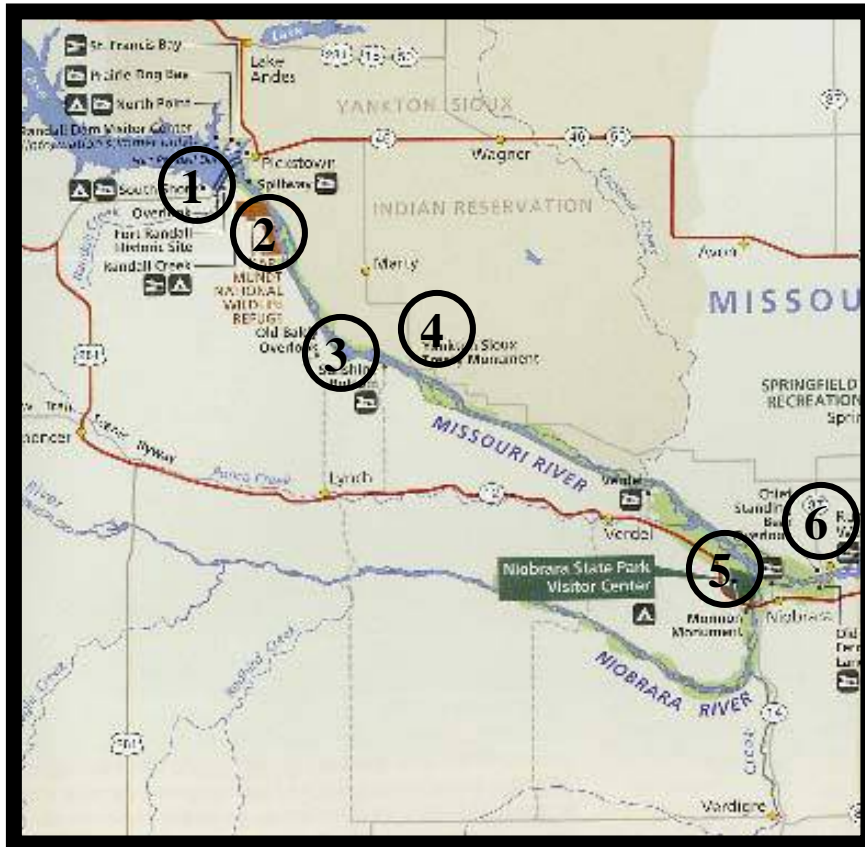
Now you can experience these wild parts of the "Big Muddy" and the exciting history they hold.

# The 39 Mile District of Missouri National Recreational River

Match the **LOCATION** with the correct **NAME** of that location on the 39-mile district of the MNRR. Write the number of each location on the line to the left of the name.



Use the official MNRR brochure for help!



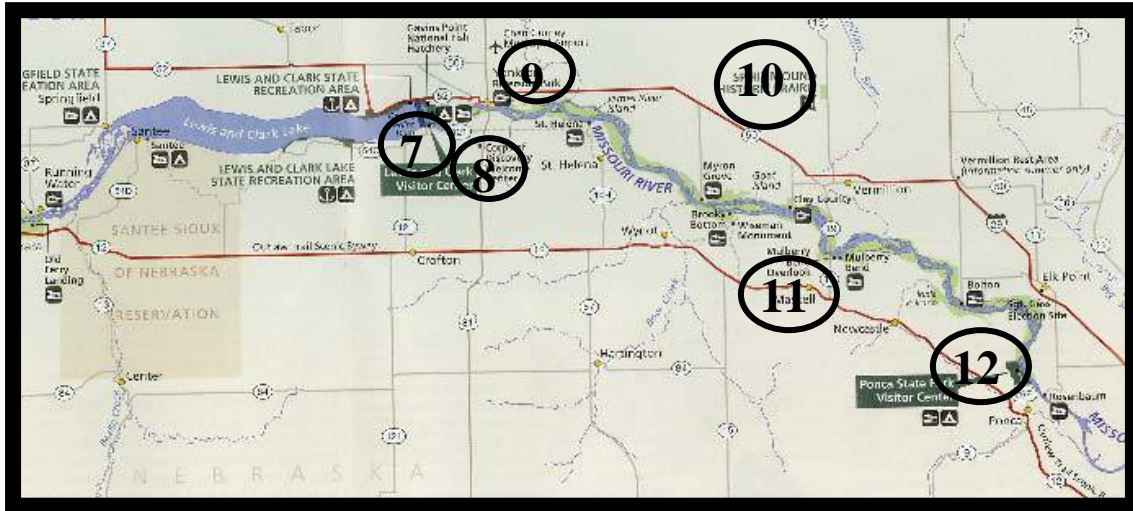
- \_\_\_ Old Baldy Overlook
- \_\_\_ Niobrara State Park
- \_\_\_ Chief Standing Bear Memorial Bridge Overlook
- \_\_\_ Fort Randall Dam Overlook
- \_\_\_ Yankton Sioux Treaty Monument
- \_\_\_ Karl E. Mundt National Wildlife Refuge

# The 59 Mile District of Missouri National Recreational River

Match the number of each **LOCATION** with the correct **NAME** of that location on the 59-mile district of the MNRR. Write the number of the of each location on the line to the left of the name.



Use the official MNRR brochure for help!



- \_\_\_Ponca State Park Visitor Center
- \_\_\_Gavins Point Dam Visitor Center
- \_\_\_Mulberry Bend Overlook
- \_\_\_Corps of Discovery Welcome Center
- \_\_\_Yankton Riverside Park
- \_\_\_Spirit Mound Historic Prairie

# Yankton Sioux Treaty Monument



Navigate! From Pickstown, go east on Hwy 46, turn south on the road to Marty and the Yankton Sioux Headquarters. At the church, turn left and then the next right, follow the turns of the paved road a little over 6 miles. Look for a cemetery on the left; the monument is the next left. Return to Hwy 46 or turn left at the end of the road and continue to Hwy 37.

Use the interpretive panel at the Yankton Sioux Treaty Monument to help you answer the following questions, and brainstorm your responses as asked below. Draw a picture of the monument in the box at the left.

## Treaty of 1858:

The Yankton Sioux had to decide whether to join other armed Sioux tribes for war or to co-exist in peace with the immigrants. They chose \_\_\_\_\_.

After selling most of its lands to the U.S. Government, the tribe agreed to move to a reservation located on the \_\_\_\_\_ side of the Missouri River.

Imagine that you were a leader of the Yankton Sioux Tribe living at this time. Would you have chosen to join with the other Sioux tribes in armed resistance against the incoming settlers, or would you have chosen peace (as this tribe did)? Think of some pros and cons for each possibility before you decide.

### Armed resistance against settlers:

Pros

Cons


### Co-existence with settlers:

Pros

Cons


Circle your final decision:

Resistance

Co-existence

Think about how you would explain your decision to your fellow leaders and to members of your clan or *Oyate*.



# Fort Randall Overlook

Hwy 281 West of Fort Randall Dam – Look for sign at top of hill

Use the panel “A Home for Wildlife” at Fort Randall Overlook to answer a few questions. Then, test your ability to answer some fun facts about eagles below! The answers to the eagle trivia can be found on the back of this page....no peeking till you’ve tried!!!

## A Home for Wildlife

\_\_\_\_\_ trees stand in one of the last stretches of the natural Missouri River bottomlands.

Before the dams were built, the free flowing river yielded \_\_\_\_\_, waterfowl and other wildlife that the \_\_\_\_\_ preyed upon.

Senator \_\_\_\_\_ E. \_\_\_\_\_ was a strong supporter of the Endangered Species Act which has caused the bald eagles to make a dramatic comeback.

The Karl Mundt National Wildlife Refuge lands provide \_\_\_\_\_ and \_\_\_\_\_ areas for the eagles.



## Eagle Fun Facts!



1. The body of an eagle is made for flying and catching prey. To do these things, the body must be:
  - a. Heavy and strong
  - b. Light and strong
  - c. Heavy and weak
2. A Bald Eagle has more than 7,000 feathers. All of these feathers put together weight about:
  - a. 21 ounces.
  - b. 2 pounds
  - c. 10 pounds
3. Most eagles have wings that are:
  - a. Short and wide
  - b. Long and narrow
  - c. Long and wide
4. Eagles are wonderful fliers and some can swoop through the air at incredible speeds. As they dive, they may go as fast as:
  - a. 40 miles per hour
  - b. 100 miles per hour
  - c. 200 miles per hour
5. As an eagle soars high above the earth, it is in a perfect position to see prey below on the ground. How does the eyesight of an eagle compare to that of a human?
  - a. Eagle eyesight is much better
  - b. Human and eagle eyesight is about the same.
  - c. Human eyesight is much better
6. Eagles prefer to eat their prey:
  - a. On the ground
  - b. In a tree
  - c. Near the water



## Answers to “Eagle Fun Facts”

1. B – It must be light enough to get off the ground and fly high in the air, but strong enough to swoop down on prey and carry it away.
2. A – If you took 30 of these feathers in your hand, they would weigh less than a penny. But don't collect eagle feathers! Only American Indians can legally own them for religious and ceremonial purposes.
3. C – Wide wings hold a bird in the air at low speeds and provide extra lift for lifting prey off the ground.
4. B – Most experts estimate eagle diving speed at around 100 mph. A smaller predator, the peregrine falcon, has much slimmer wings and can approach 200 mph in a dive.
5. A – The term “eagle eye” means very sharp vision, and that's what eagles have. They can focus on small objects at great distances and can see 8 times more clearly than humans. An eagle can probably see a rabbit 2 miles away!
6. B – Once an eagle captures its prey, it usually flies up into a tree with it where it is safe from other predators that would try to steal its meal.



# Niobrara State Park

Use the state park map to find the interpretive panels at Niobrara State Park to help you answer the following questions. Use the number corresponding with the chosen letter in your answer to fill in the blanks at the bottom. Have fun!

## The Great Missouri River – at Cramer Interpretive Shelter

- The \_\_\_\_\_<sub>2</sub> River is the continent's longest river.
- One nickname given to the continent's longest river: "\_\_\_\_\_<sub>4</sub>\_\_\_\_\_"
- Congress set aside \_\_\_\_\_<sub>1</sub> free-flowing portions as Missouri National Recreational River.



## Astonishing Wildlife – at group lodge

- Lewis and Clark observed an animal new to science known as the \_\_\_\_\_<sub>12</sub>.
- This "critter" was finally \_\_\_\_\_<sub>3</sub> from its hole after a long struggle.
- What French term did Clark use to identify the Niobrara? \_\_\_\_\_<sub>9</sub>

## Ever Changing Sandbars – At Cramer Interpretive Shelter

- When the Niobrara's flow is strong, it carries a lot of \_\_\_\_\_<sub>7</sub>.
- When the Missouri is high, it backs up into the Niobrara and forces the sand and silt to drop \_\_\_\_\_<sub>13</sub>.
- The Missouri and Niobrara are continually \_\_\_\_\_<sub>11</sub> the sandbars and moving them upstream and downstream.

## Ponca Homeland– At Cramer Interpretive Shelter

- In the 1850's, the Ponca were persuaded to \_\_\_\_\_<sub>10</sub> to a reservation 15 miles up the Niobrara.
- When matters worsened, they were forced to move to \_\_\_\_\_<sub>15</sub> \_\_\_\_\_<sub>14</sub>.
- Chief \_\_\_\_\_<sub>5</sub> and 30 followers came back to Nebraska during the cold winter; the chief was arrested and filed suit for his release.
- After the trial, many Poncas \_\_\_\_\_<sub>8</sub> to their homeland.



Along with a portion of the Missouri River, 20 miles of the Niobrara has been designated by congress as a

\_\_\_\_\_ and \_\_\_\_\_.

to be administered by the:

\_\_\_\_\_





# Corps of Discovery Welcome Center

2 miles south of the Meridian Bridge on US Hwy 81.

Find the three interpretive panels around the Corps of Discovery Welcome Center to help you answer the following questions. The first panel is located behind the building; from this panel, look to the right to find the other two at the top of the hill. When you have answered the questions, circle each answer in the word search below.

1. In 1911, a plan was drafted for a \_\_\_\_\_ that would run through America from Canada to Mexico.

2. The path of the Meridian Highway followed an Indian trade route that later served as the \_\_\_\_\_ Trail.

3. The highway was completed in 1924 with the opening of the \_\_\_\_\_ at Yankton, South Dakota.

4. On August 27, 1804, the Lewis and Clark Expedition set up its camp for four days downstream from \_\_\_\_\_.

5. Meriwether Lewis and William Clark held a great meeting and feast with the Yanktons upstream at Calumet Bluff on August 30-31 because \_\_\_\_\_ wanted them to establish good relations with the Indians.

M I S S O U R I N A T I O N A L M R  
 E C R E A T I O N A L R R I V E E R  
 N O S R E F F E J T N E D I S E R P  
 D J K T P Y B D M R L W P M J G I H  
 L T E R A S A E A I J P E L I F D X  
 O O D I W D D W A M I N A O J L I A  
 Q X J R N V S B H S M H C H Y C A O  
 G Y Z N E E L E S G J E E S M Y N B  
 H J D K O E I I P U I F D I F V B X  
 Z Z R D T E S V T O E H I H Y C R I  
 O L M R U S W E G M Z W H C B H I A  
 O C A Q I M P J O X D Y N H J G D W  
 U D R M D Y G U E M R E O C U J G U  
 E F G X P S E I C J M S Z I Z L E O  
 W Z S C H T P C B P I U Z Q D X N P  
 R Z D O X H O J F H B W G X G E Q C  
 Z L B P P Q P V G S L J X C K I W F  
 F F U L B T E M U L A C I A L K F I

- |         |          |
|---------|----------|
| 1 _____ | 6 _____  |
| 2 _____ | 7 _____  |
| 3 _____ | 8 _____  |
| 4 _____ | 9 _____  |
| 5 _____ | 10 _____ |

6. At the meeting with the Yanktons, Lewis and Clark explained the expeditions's exploratory purposes and Jefferson's desire for \_\_\_\_\_.

7. Chief Shake Hand and Half Man spoke of the tribe's need for \_\_\_\_\_.

8. The Missouri is the continent's longest river flowing 2,341 miles from the Rocky Mountains to the \_\_\_\_\_.

9. \_\_\_\_\_ is loaded with sediment and steeped in stories about American Indians, Lewis and Clark, fur traders, and steamboat captains

10. Unlike \_\_\_\_\_ and channelized sections, these river segments provide opportunities to pursue outdoor activities within one of America's great historic settings.

**After you've completed the wordsearch, a hidden message should be revealed. Write this hidden message below.**

-----  
 -----

# Riverside Park

## Sculpting the Landscape

**4 Down** This forms as riverbanks bounce the river's energy back and forth

**5 Down** When meanders have been cut off and left dry by the river's main channel, \_\_\_\_\_ form.

**6 Down** Sometimes, rivers divide and follow both the older (deeper) and newer (shallower) channel. When this happens, what develops between these two channels?



**15 across** Another name for dead trees which have fallen into the water.

**9 Across** What forms as fast-moving water starts to slow downstream?

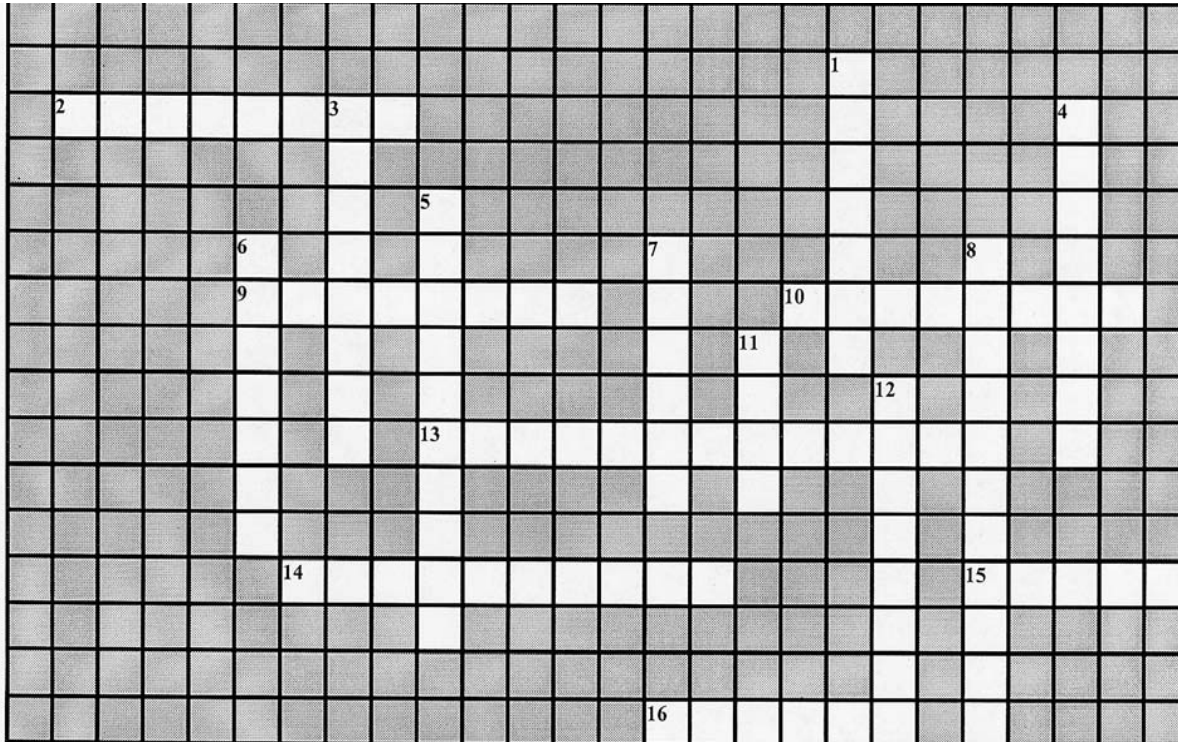
**10 Across** As rivers slice through the banks of a meander after a flood, \_\_\_\_\_ sometimes form

## Yankton: Territorial Capital



**12 Down** William Jayne selected Yankton as the capital of the territory because of its \_\_\_\_\_ on the Missouri River.

**2 Across** Where was the capital moved to in 1883?



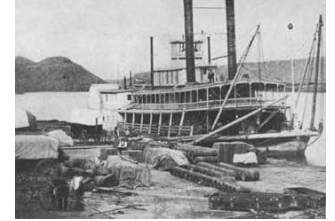
**7 Down** In 1889, South Dakota and North Dakota were established as \_\_\_\_\_.

## Yankton Riverboats

**3 Down** Pilot Grant Marsh began his riverboat career as a \_\_\_\_\_.

**13 Across** Grant Marsh set a speed record bringing wounded soldiers back from the Battle of the \_\_\_\_\_.

**16 Across** Steamboats served forts, \_\_\_\_\_ agencies, and frontier villages.



## Missouri River

**1 Down** Missouri National Recreational River consists of two \_\_\_\_\_ segments of the Missouri River.

**8 Down** Missouri National Recreational River is managed by a \_\_\_\_\_ of local, state, tribal, and federal agencies.

**14 Across** Everyone on a watercraft **MUST** have a \_\_\_\_\_.

**11 Down** Do not \_\_\_\_\_ alone!



Take a walk along the Big Muddy and find the interpretive panels to help solve this crossword puzzle.

Puzzle design by edhelper.com



# Spirit Mound Historic Prairie

Hwy 19 north of Vermillion



**Hike up the hill and use the interpretive panels along the trail to help you answer the questions. Then, use the letters from the numbered spaces to complete the message at the bottom of the page.**

## Spirit Mound Trail

Spirit Mound is a sacred \_\_\_\_\_ site for nearby American Indian Tribes.  
16 2

Tribal members make pilgrimages to Spirit Mound as well as say prayers atop it, and leave  
\_\_\_\_\_.  
3

## Hill of Little Devils

The Corps of Discovery traveled \_\_\_\_\_ miles to visit the "High Hill"  
7

The Corp of Discovery did not see any \_\_\_\_\_, but they did see herds of \_\_\_\_\_  
13 5  
and \_\_\_\_\_ and flocks of \_\_\_\_\_.  
16

The American Indians believed that birds gathered on the hill because of \_\_\_\_\_.  
14

## Canotina Wiconi Paha / Mountain of "little people"

The Canotina are also known as "\_\_\_\_\_."  
5

Many of the American Indians believed that it was "\_\_\_\_\_" to see  
the Canotina.  
17 8

A person who encounters a Canotina or is hurt with one of their arrows should see a  
\_\_\_\_\_ to avoid \_\_\_\_\_.  
12 1 9 4

## Restoring the Prairie

Native grasses and \_\_\_\_\_ flowers are being restored on Spirit Mound.  
10

The grasses big and little bluestem, Indian grass, and \_\_\_\_\_ grass may  
grow 8-9 feet tall!  
11

These grasses can \_\_\_\_\_ weather extremes, mowing, grazing, and fire.  
13

**By protecting Spirit Mound, the National Park Service and its partners preserve the**

**and**

1 2 3 4 5 6 7 8 9 10 11 12 13 14 15 16 17 18

**values of Missouri National Recreational River!**

# Mulberry Bend Overlook

Nebraska Hwy 15, SD 19, south of bridge



**It's just a footprint**, but when hundreds of people walk in the same place, the plants die and the soil becomes hard. When it rains, the bare soil is washed away and leaves a gully that keeps getting deeper and wider. The mats you see on the hillside here cover places where people have taken shortcuts straight up the hill. These mats hold the soil in place and help conserve moisture until new grass can grow.

**Junior Rangers always stay on the trails!**

Use the interpretive panels at Mulberry Bend to help answer these questions. After circling the correct answer, copy the code letter to the final question below.

## Prehistoric Farmers

**1. The American Indians who lived on the bottomlands 1,000 to 600 years ago:**

- R. Were unlike their 19<sup>th</sup>-century descendants in several ways.
- A. Lived exactly like the Indians of the 19<sup>th</sup> century
- E. Lived very similar to the Indians of the 19<sup>th</sup> century

**2. These prehistoric farmers**

- W. Roamed the great plains
- U. Lived in portable hide-covered teepees
- E. Settled in villages consisting of rectangular houses covered with earth, thatch, or mud

**3. The prehistoric farmers got their food by:**

- L. Hunting and gathering foodstuffs
- E. Raising corn, squash, beans, and sunflowers and occasionally hunting.
- M. Walking to the nearest grocery store

**4. The farming culture probably began to disappear because of**

- O. Drought and Disease
- T. Warfare and Overpopulation
- F. All of the above

## Vermillion Flood

**5. The town of Vermillion was originally located:**

- P. On the top of a bluff
- L. On the bottomlands just across the river
- A. In the side of a cliff

**6. In 1881, the Missouri River began to rise rapidly after:**

- G. It rained for 40 days and 40 nights
- Y. Everyone drained their bathtubs
- O. A 10 foot blanket of snow began to thaw in late March

**7. The town of Vermillion was moved to:**

- W. The top of a bluff
- S. The bottomlands just across the river
- R. The side of a cliff

## Sculpting the Landscape

**8. The Missouri decreases in elevation \_\_ foot/feet for every mile**

- I. 1
- E. 2
- A. 3

**9. The waters of the Missouri National Recreational River**

- M. Cut straight down through the valley.
- N. Wind around high spots, solid rocks, and resistant soils
- S. Move faster than any other river.

**10. Below the dams, the relatively clear waters:**

- R. Erode the sandy riverbanks and capture new loads of sediment
- P. Sculpt the landscape
- G. Both of the above



**Missouri  
National  
Recreational  
River differs  
from many other  
rivers because it  
has been set  
aside to remain:**

**F**                -  
0    1    2    3

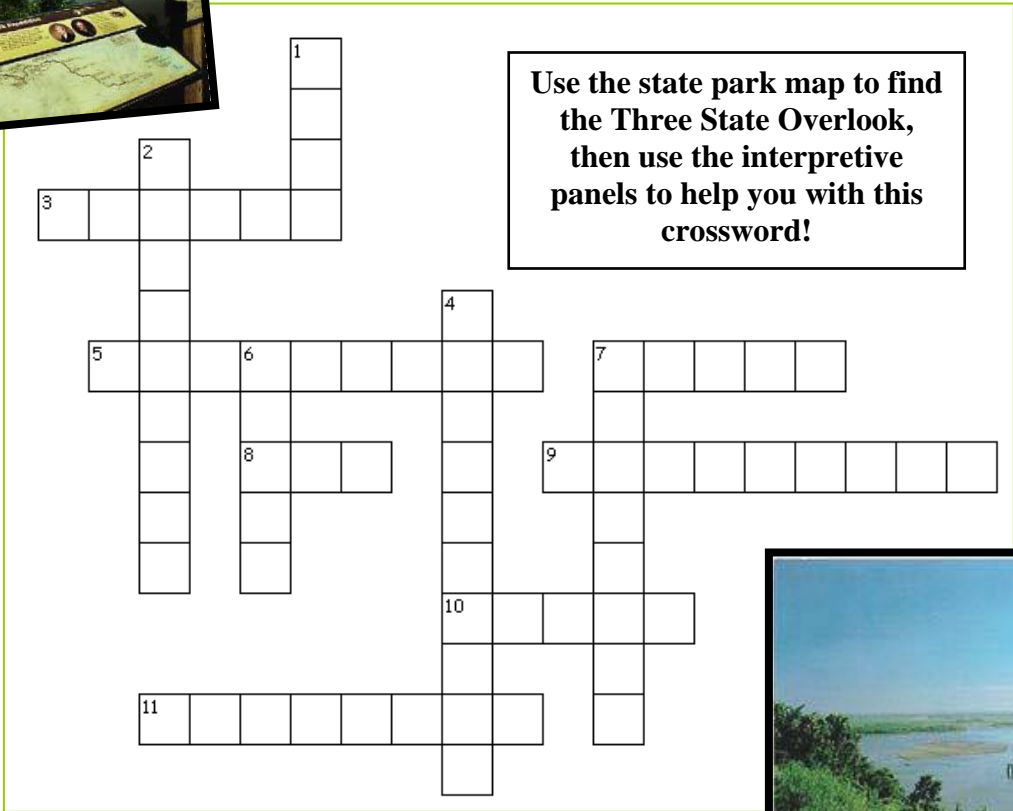
                               
4    5    6    7    8    9    10



# Ponca State Park

## Three State Overlook

Use the state park map to find the Three State Overlook, then use the interpretive panels to help you with this crossword!



**Across**

- 3. 160 \_\_\_\_\_ and animals come together (many at the outer limits of their ranges.)
- 5. Commissioned the "Corps of Discovery" to find a route to the Pacific Ocean.
- 7. The right "face" of the Missouri is the new and \_\_\_\_\_.
- 8. The left "face" of the Missouri is \_\_\_\_\_ and wild.
- 9. The Missouri River below looked \_\_\_\_\_ in 1804 than it does today.
- 10. To move their watercraft through the water, the Corp of Discovery usually \_\_\_\_\_, poled, or towed through dangerous waters.
- 11. \_\_\_\_\_ (For 59 miles) the river flows free and appears much as it once did in the past.

**Down**

- 1. Today's course of the Missouri River is controlled by \_\_\_\_\_ and dikes.
- 2. Gass's skills as a \_\_\_\_\_ were valuable on the expedition.
- 4. \_\_\_\_\_ The river flows in a narrow, confined course between rock-lined banks for 750 miles to St. Louis.
- 6. Patrick Gass was elected to serve as the expedition's new sergeant following the death of Charles \_\_\_\_\_.
- 7. Along the lower Missouri, the Corps of Discovery averaged \_\_\_\_\_ miles per day!

While you are at this park, be sure to stop at the Visitor Center and see the Missouri National Recreational River exhibits.

# National Park Service

Missouri National Recreational River



## Your National Parks

The National Park Service was created by Congress in 1916 to manage America's special places so that everyone can enjoy and learn from them. This federal agency also protects these places so people can continue to enjoy them in the future. These parks belong to you and to all Americans.

There are many kinds of National Parks. In addition to those called National Parks, there are National Monuments, National Memorials, National Lakeshores and Seashores, National Battlefields, and National Rivers. These parks protect special natural or famous places, or commemorate famous people and events in American history. Some of them cover hundreds of square miles of land and some are as small as a house and yard.



**Visit with a ranger or go to [www.nps.gov](http://www.nps.gov) and use the map on the next page to answer the questions below.**

Circle the location of Missouri National Recreational River.

If you have visited any other National Parks, mark one on the map with a square and write the name of it here. \_\_\_\_\_

What other National Parks would you like to visit? List them and number each one on the map. You can pick up to 6 parks.

1 \_\_\_\_\_

4 \_\_\_\_\_

2 \_\_\_\_\_

5 \_\_\_\_\_

3 \_\_\_\_\_

6 \_\_\_\_\_



# National Park Service

Missouri National Recreational River



## What do Rangers do?

National Park Rangers do a lot of different jobs. Interpretive rangers tell visitors what their park is about and why it's an important place.

Protection rangers keep visitors safe and protect the important things in the park. Other rangers greet visitors at entrance stations and in visitor centers, hand out park maps, and issue park passes and hiking and camping permits. Many rangers do more than one of these duties, and some rangers do all of them and much more!



### What Rangers do:

Study the history and nature of their park and present programs to visitors.

Keep visitors safe and enforce park rules.

Study the park's plants and animals and protect their habitats.

Keep the park clean.

Write about the important things in our parks.

### What Junior Rangers can do:

Tell your friends about the parks you visit and why they are special places.

Always follow park rules and explore safely.

Learn about the plants and animals, and never disturb them or feed the animals.

Junior Rangers never litter and always help pick up after people who don't know how to care for their parks.

Write a story about your visit to Missouri National Recreational River on the next page. Tell us why you think the river is important and what you liked best about the park. We might even put your story on our web site!

*My visit to Missouri National Recreational River*

**Thank you** for joining our Junior Ranger program. We hope you had fun and learned lots of new and interesting things.

We're always trying to improve this program and would appreciate your comments.

Your age\_\_\_\_\_.

Did your adults have trouble finding any of the sites?\_\_\_\_\_

If so, which ones?

\_\_\_\_\_

Did you find any of the activities too easy?\_\_\_\_\_

Did you find any of the activities too hard?\_\_\_\_\_

Which site was the most fun?\_\_\_\_\_

Which was the least fun?\_\_\_\_\_

Any additional comments:



Thanks for your help.

**The National Park Rangers at Missouri National Recreational River**



# Junior Rangers

National Park Service  
U.S. Department of the Interior

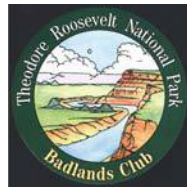


You could grow into a ranger hat, like Kelly hopes to someday!

**Rangers** learn all kinds of neat stuff and teach others to explore, learn, and protect.



**National Parks** are special places that are protected so that everyone can enjoy them and learn from them. Most National Parks have Junior Ranger programs and you can earn badges at all of them! These are just a few of the parks within a day's drive of Missouri National Recreational River.



Visit your National Parks online at: [www.nps.gov](http://www.nps.gov)

## WebRangers



National Park Service  
U.S. Department of the Interior



For more fun activities visit: [www.nps.gov/webrangers](http://www.nps.gov/webrangers)