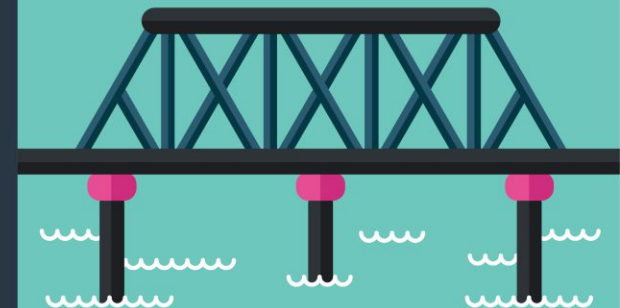
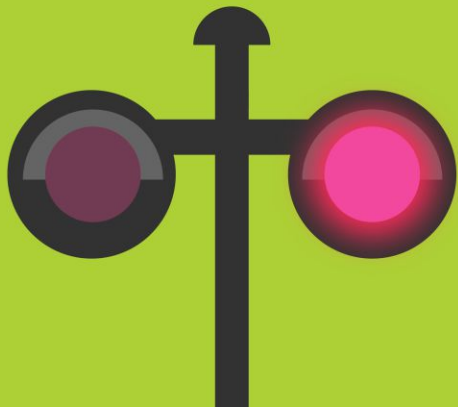
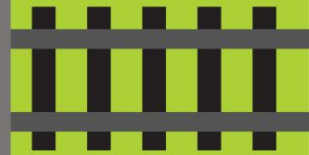


TRAIN SAFETY SAVVY



TEST YOUR TRAIN SAFETY KNOWLEDGE

THE FOLLOWING ARE SOME COMMON BELIEFS ABOUT TRAINS.
WHICH OF THE FOLLOWING ARE **TRUE** AND WHICH ARE **FALSE**?





BELIEF

**IT'S OK TO
WALK ON TRACKS
WHEN THERE ARE
NO TRAINS AROUND.**

T or F?



FALSE



TRAINS CAN COME AT
ANY TIME, ON ANY TRACK,
FROM **ANY DIRECTION.**

IT IS **NEVER SAFE TO**
WALK ON TRAIN TRACKS.

**I WILL HEAR
A TRAIN
APPROACHING.**

T or F?



BELIEF



FALSE

A man with dark hair, wearing a plaid shirt, is shown from the chest up. He has both hands pressed against his ears, suggesting he is trying to block out noise. The background is a solid red color with several large, semi-transparent diamond shapes overlaid. The text is in white, bold, uppercase letters.

TRAINS CAN BE INCREDIBLY QUIET.

**YOU MIGHT NOT HEAR
AN ONCOMING TRAIN IN TIME
TO GET OUT OF THE WAY.**



BELIEF

**IF A TRAIN COMES,
I CAN MOVE OUT OF
THE WAY IN TIME.**

T or F?

A red-tinted illustration of a man running, overlaid with a large white 'X' and the word 'FALSE' in bold white letters. The background features a textured, wavy pattern resembling water or sand. The man is depicted in a dynamic running pose, wearing a t-shirt and pants. The word 'FALSE' is centered in a large, bold, white sans-serif font.

FALSE



**TRAINS MOVE MUCH
MORE QUICKLY THAN
YOU DO.**

**THE ONLY WAY TO
BE SAFE IS TO NEVER
BE ON THE TRACKS.**



BELIEF

**A TRAIN WILL
STOP IN TIME TO
AVOID HITTING
A PERSON.**

T or F?


A red-tinted illustration of a person in a medical setting, possibly a patient in a hospital bed, with the word 'FALSE' overlaid in large white letters. The background shows a person lying in a bed, with medical equipment and a nurse or doctor standing by the side. The entire scene is rendered in a monochromatic red color scheme with a textured, sketch-like appearance.

FALSE



IT CAN TAKE A TRAIN
A MILE OR MORE TO COME
TO A FULL STOP.

THAT'S THE LENGTH OF
18 FOOTBALL FIELDS.



A TRAIN WILL STOP, BUT
IT MIGHT NOT BE ABLE
TO STOP **IN TIME** TO AVOID
HITTING A PERSON ON
THE TRACKS.



BELIEF

**IT'S SAFE TO GET
CLOSE TO A
STOPPED TRAIN.**

T or F?

A red-tinted illustration of a group of people in a boat, possibly a lifeboat, with a large white 'FALSE' text overlay. The illustration shows several people in a small, crowded space, with one person in the foreground looking towards the viewer. The overall tone is somber and urgent.

FALSE



**A STOPPED TRAIN CAN START
MOVING AT ANY TIME.**

**IF THE TRAIN STARTS
MOVING UNEXPECTEDLY,
YOU MIGHT GET HURT.**

A red-tinted illustration of a train, possibly a passenger train, with a large, semi-transparent 'X' overlaid across the center. The train is shown from a side-on perspective, moving towards the right. The background is a textured, sketch-like style. The text is centered over the 'X' in a bold, white, sans-serif font.

**IT IS NEVER SAFE
TO GET CLOSE TO A TRAIN,
EVEN IF IT'S STOPPED.**

MISCONCEPTIONS

The background features a light blue sky and a green field. In the distance, there are several stylized trees with rounded, light green canopies and thin grey trunks. The trees are arranged in a line across the horizon.

ALL OF THESE COMMON BELIEFS ARE
FALSE.

MISCONCEPTIONS



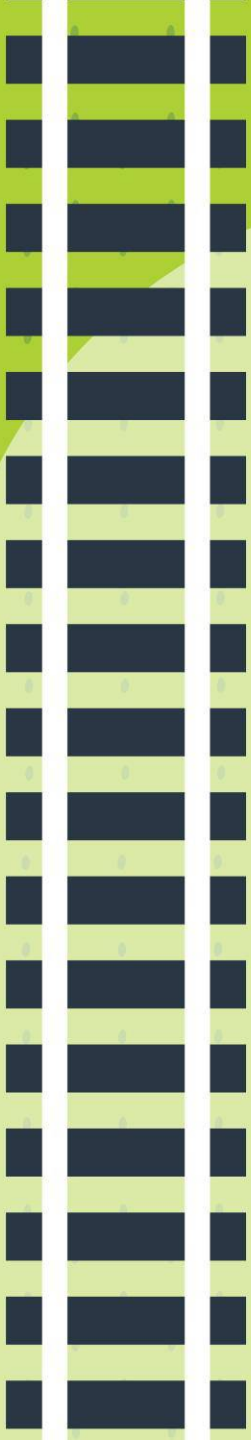
Because of these misconceptions, everyday people get hurt doing things they don't realize are unsafe around railroad tracks.

**WE WANT YOU TO BE *SAFE* AROUND
TRAINS AND TRACKS.**

ANY TIME IS
TRAIN TIME



Trains, even passenger trains, DO NOT always run on a schedule. They can run ANY TIME of the day or night. They can run on ANY TRACK, at ANY TIME, from ANY DIRECTION.



**Trains cannot swerve to avoid
something in their path the
way cars can.**


**TRAINS DON'T HAVE
STEERING WHEELS LIKE CARS DO.**

**A TRAIN
CAN ONLY
FOLLOW THE TRACKS.**

PEOPLE OFTEN THINK THAT TRACKS ARE SAFE IF THERE IS NO TRAIN.



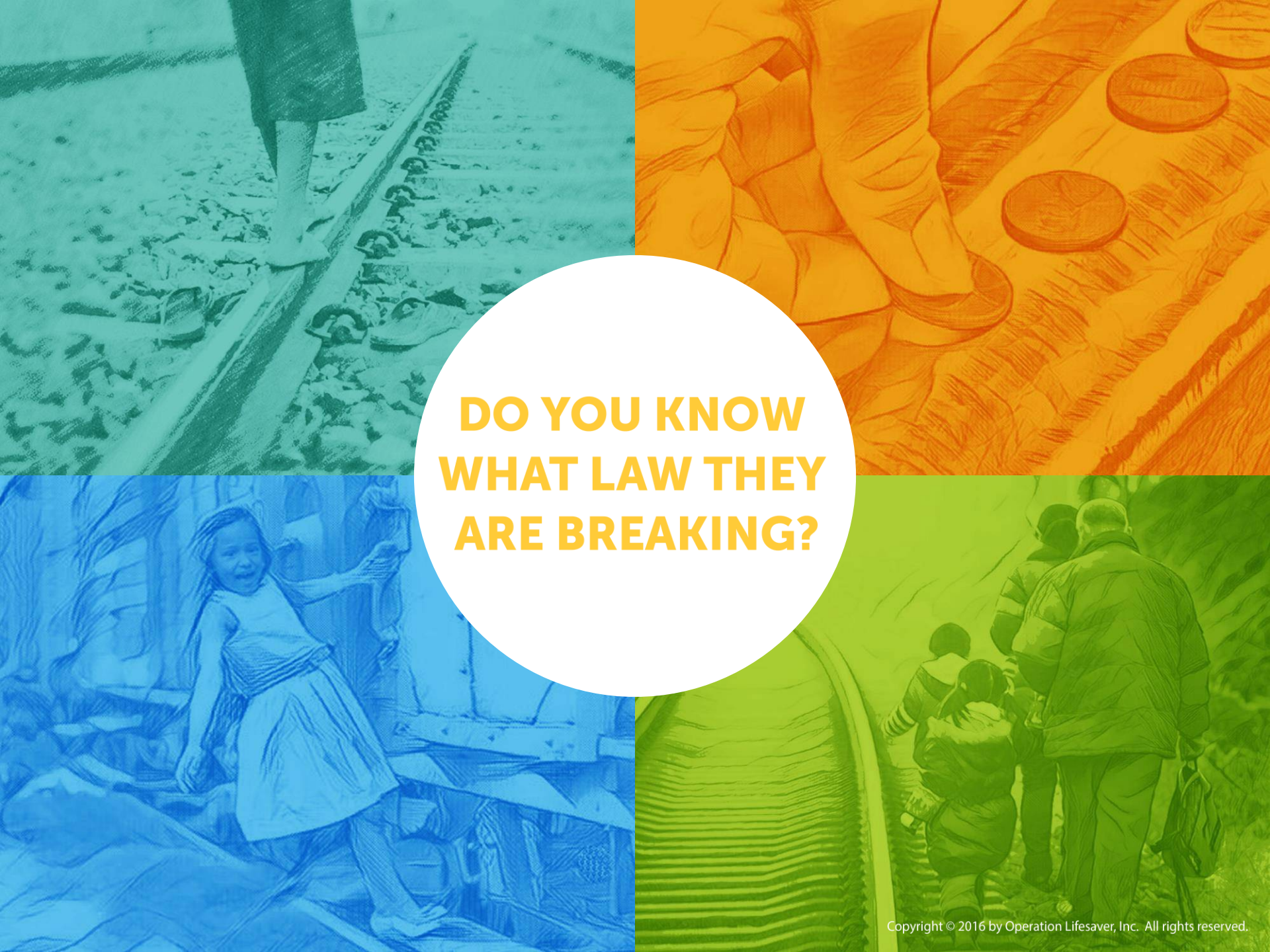
People think they will hear an approaching train in time to move a safe distance away. Unfortunately, this isn't the case. Many people don't realize that **TRAINS CAN BE VERY QUIET AND CAN SNEAK UP ON YOU.**



**SOME OF
THE PEOPLE
IN THESE
ILLUSTRATIONS
ARE BREAKING
THE LAW.**



**CAN YOU
SPOT THEM?**



**DO YOU KNOW
WHAT LAW THEY
ARE BREAKING?**

ALL OF THESE PEOPLE ARE
TRESPASSING.

“Trespassing” is going somewhere you’re not supposed to go, like walking into a stranger’s house without permission.

TRESPASSING IS AGAINST THE LAW.

This law is meant to keep us safe.





IS THE MIDDLE OF THE STREET A GOOD PLACE TO WALK OR PLAY?



OF COURSE NOT!

Train tracks are similar to a street. Even if no train is present, the tracks are **NEVER** a safe place to walk or play. Trains can run on **ANY TRACK** from **ANY DIRECTION** at **ANY TIME**.



PROPERTY SURROUNDING THE TRACKS IS CALLED THE RAILROAD RIGHT-OF-WAY.

This can include gravel service roads and green space beside the tracks.



It belongs to the railroad and just like walking on the tracks it is
DANGEROUS AND ILLEGAL
to walk in these areas.



**STOPPED TRAINS CAN MOVE
WITHOUT WARNING.**



IT IS NEVER SAFE

to play on or near a stopped train— you could get hurt.



OBJECTS PLACED ON TRAIN TRACKS CAN BE
DANGEROUS
EVEN VERY SMALL ONES!



When a train hits an object on the tracks, it can fly off at high speed and hurt someone.

WHERE DO YOU CROSS THE TRACKS?

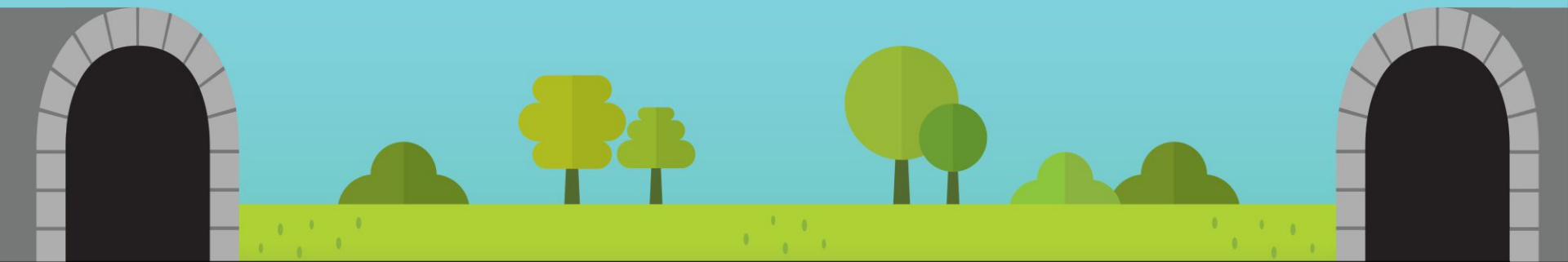


YOU SHOULD ONLY CROSS TRAIN TRACKS AT A DESIGNATED CROSSING, SUCH AS:

SIDEWALKS

**PEDESTRIAN
OVERPASSES**

**OR PEDESTRIAN
UNDERPASSES**

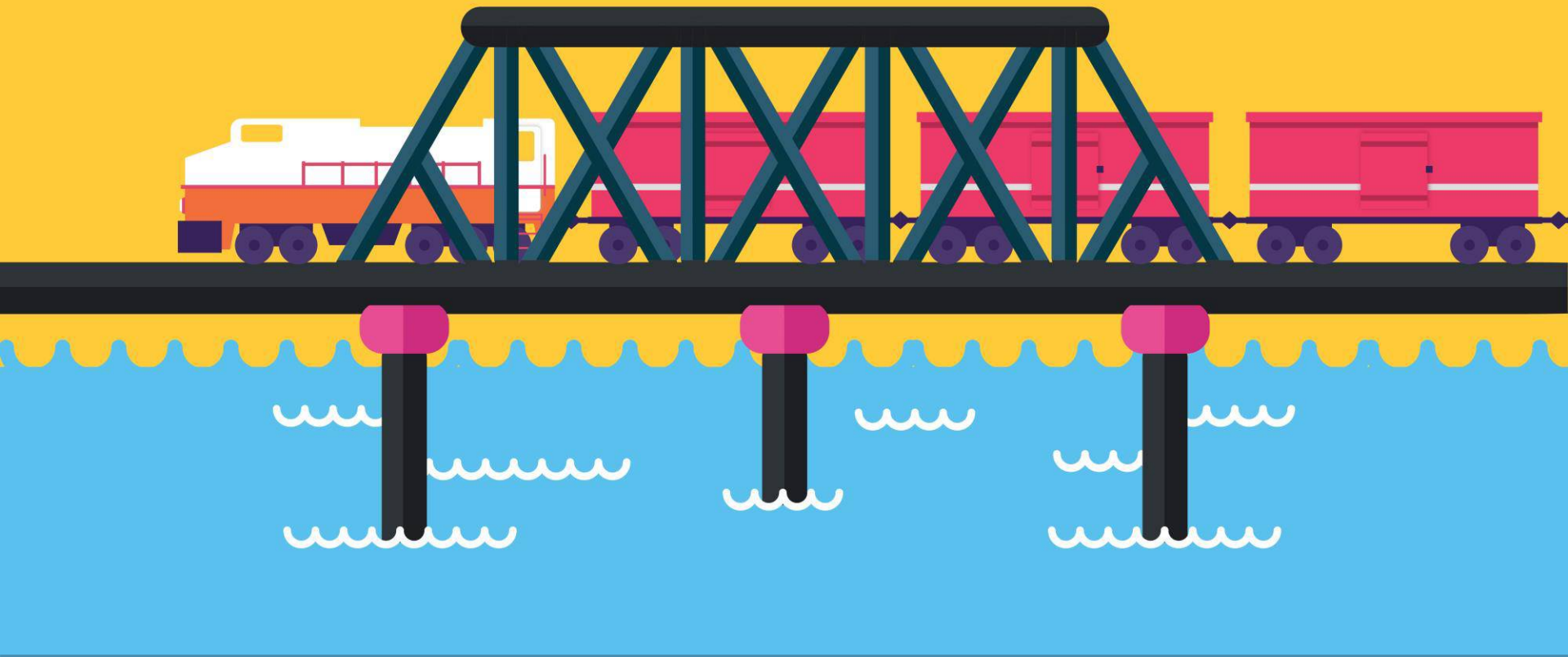


JUST LIKE CARS ON A STREET,
TRAINS ON THE TRACKS RUN IN

← **BOTH DIRECTIONS** →

When one passes, another may be coming on a different track. It is important to **look** in both directions and **listen** carefully before crossing.

**IT IS NEVER SAFE
TO BE ON A TRAIN TRESTLE, BRIDGE, OR IN A TUNNEL.**



**THE TRAIN IS WIDER THAN THE TRACKS, WHICH MEANS
THERE IS NO ROOM FOR ANYTHING OR ANYONE ELSE.**

SIGNS



ADVANCED WARNING

This sign warns you that the road crosses railroad tracks ahead.



CROSSBUCK

This sign marks the crossing; you should look both ways and listen for the train.

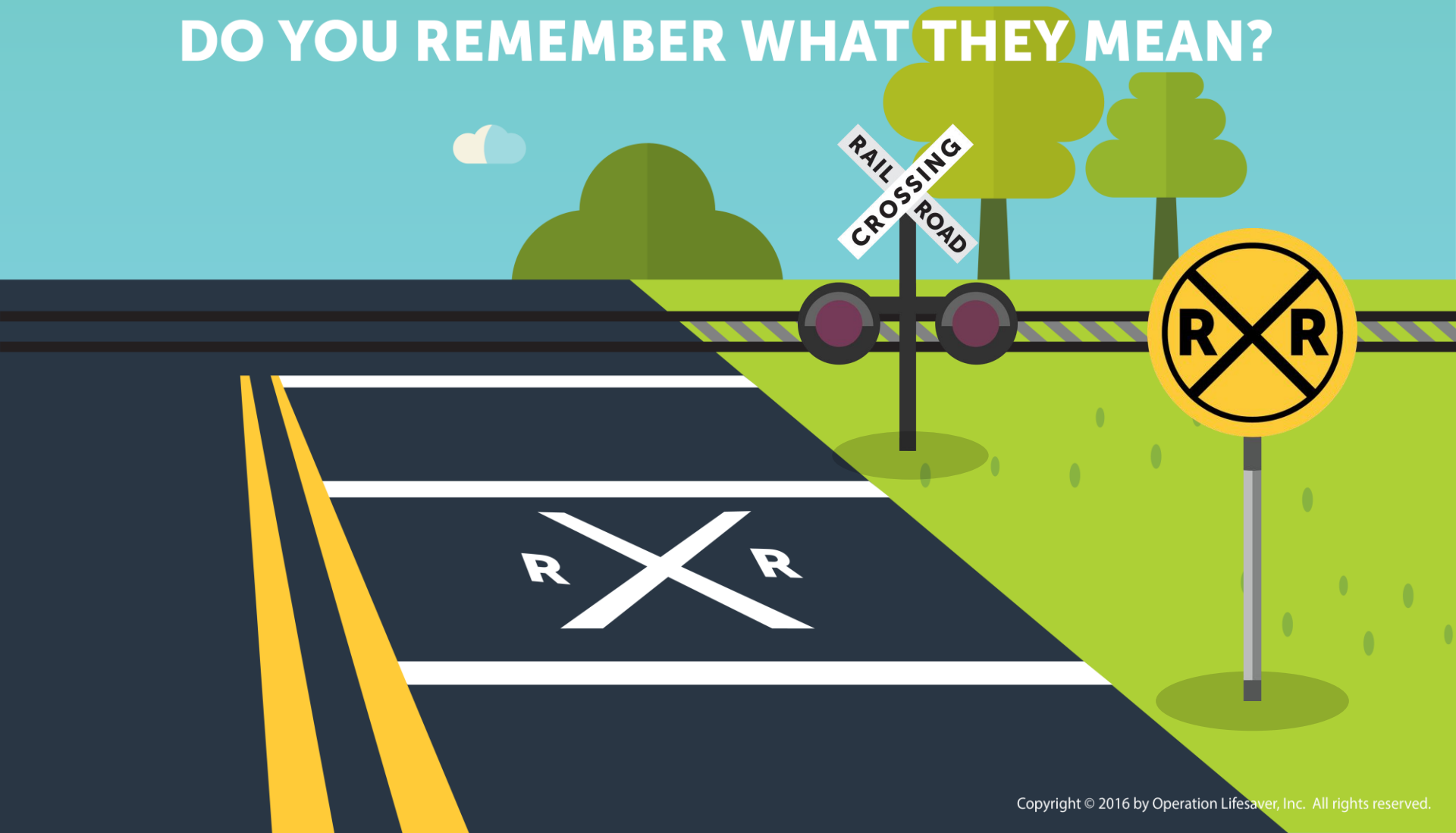


FLASHING RED LIGHTS

When the red lights are flashing, it means a train is coming.

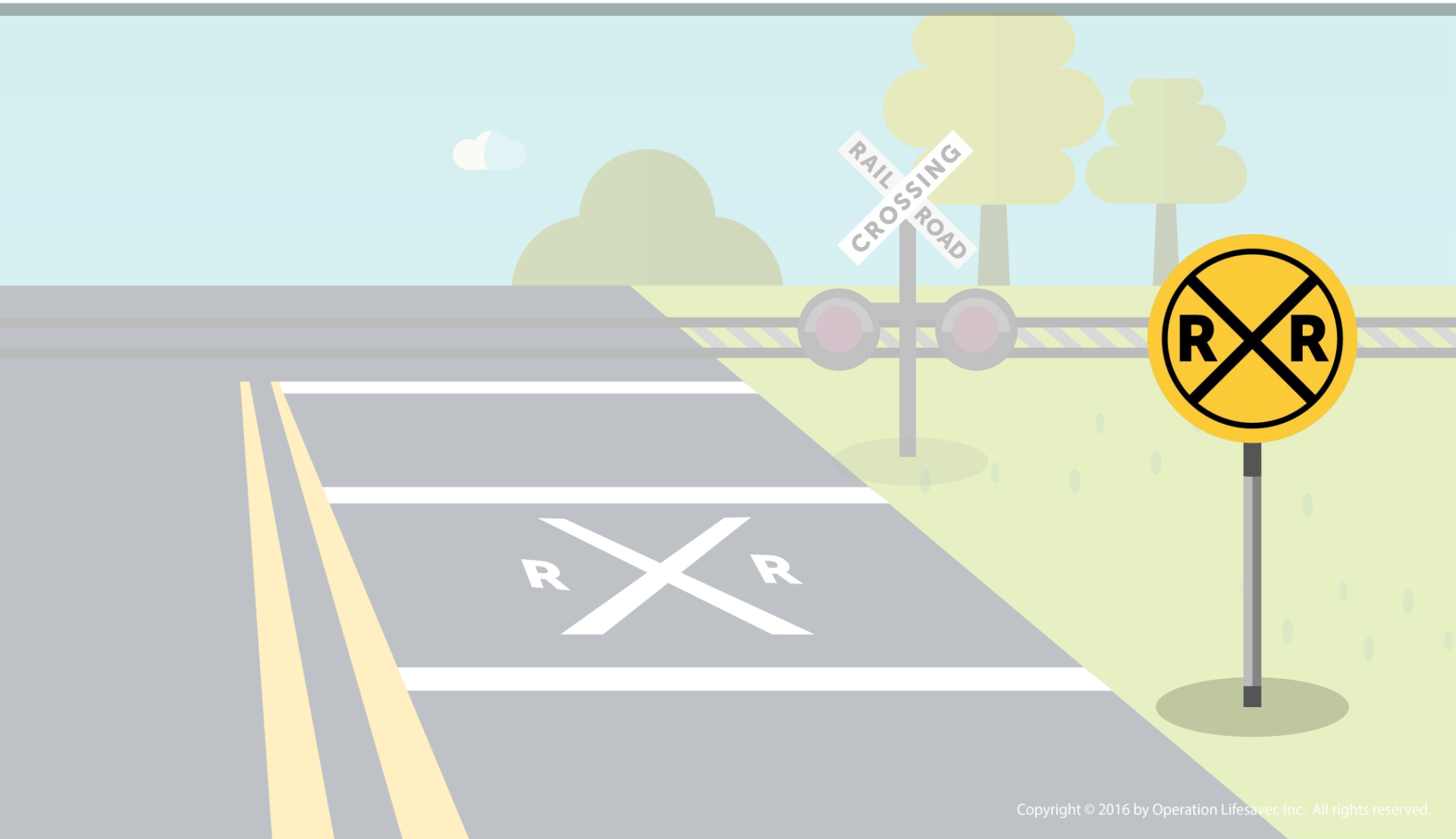
CAN YOU SPOT ALL OF THE RAILROAD SIGNS IN THIS IMAGE?

DO YOU REMEMBER WHAT THEY MEAN?



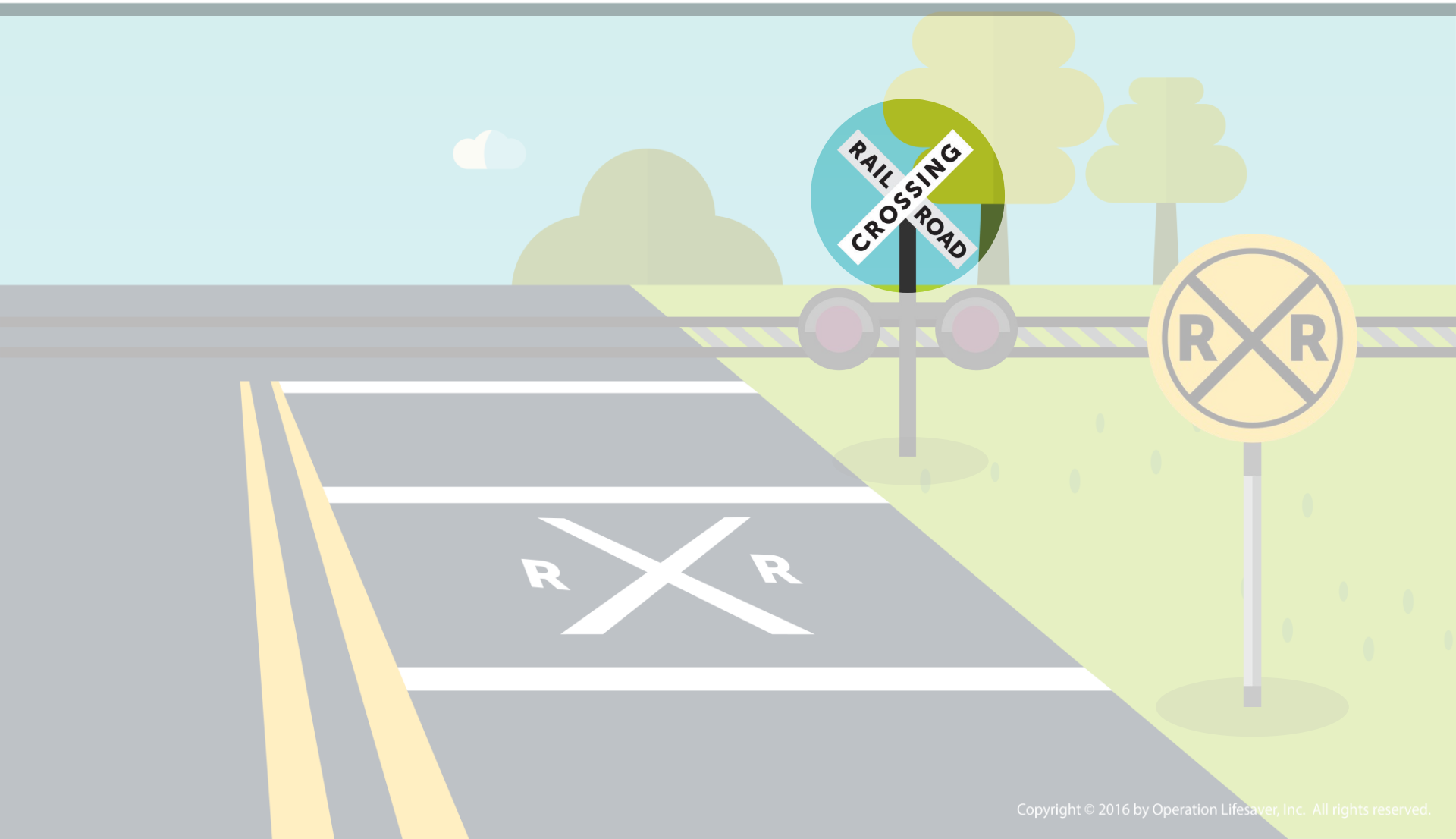
ADVANCED WARNING

This sign warns you that the road crosses railroad tracks ahead.



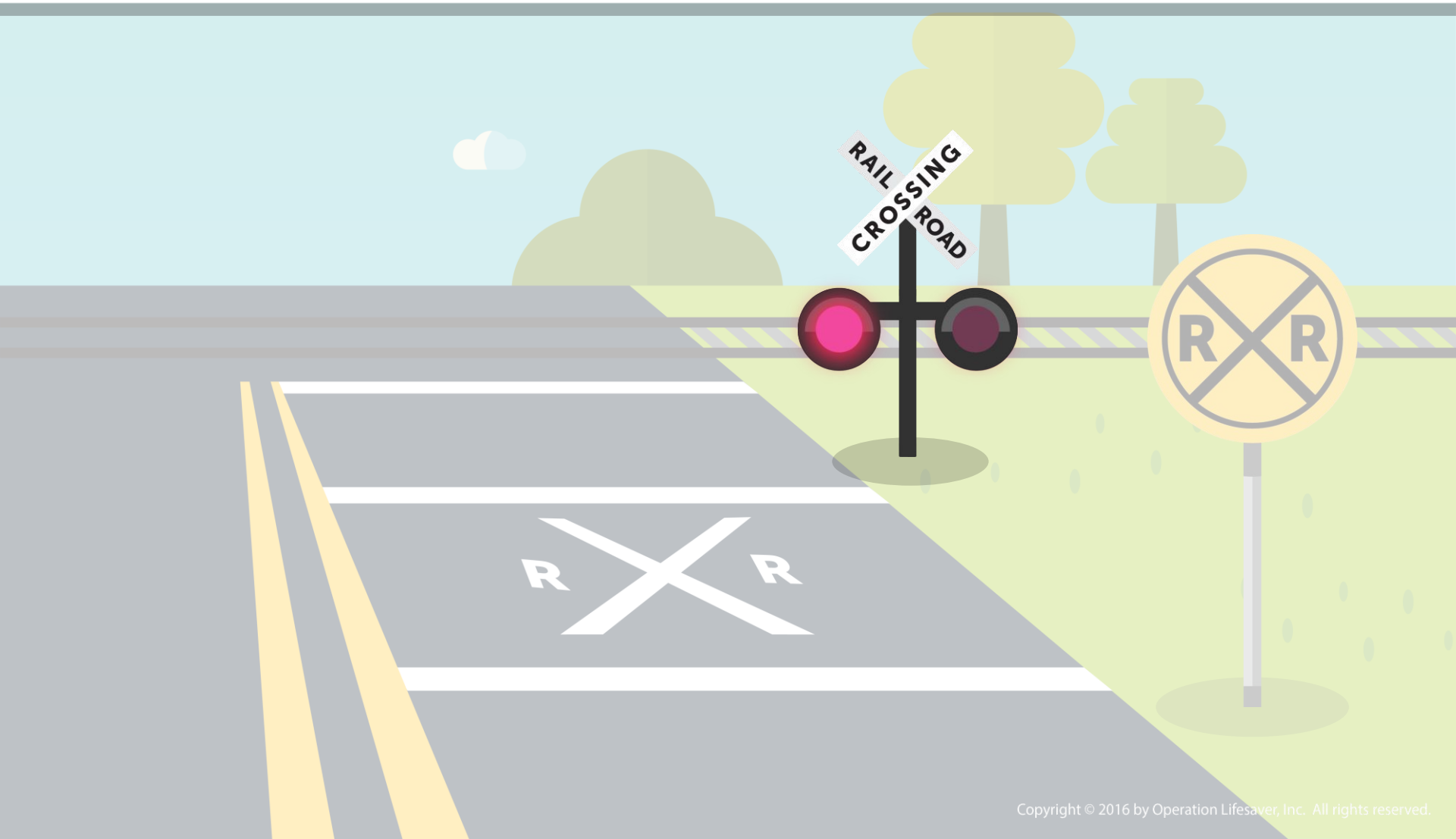
CROSSBUCK

This sign marks the crossing; you should look both ways and listen for the train.



FLASHING RED LIGHTS

When the red lights are flashing, it means a train is coming.



**THANK
YOU**