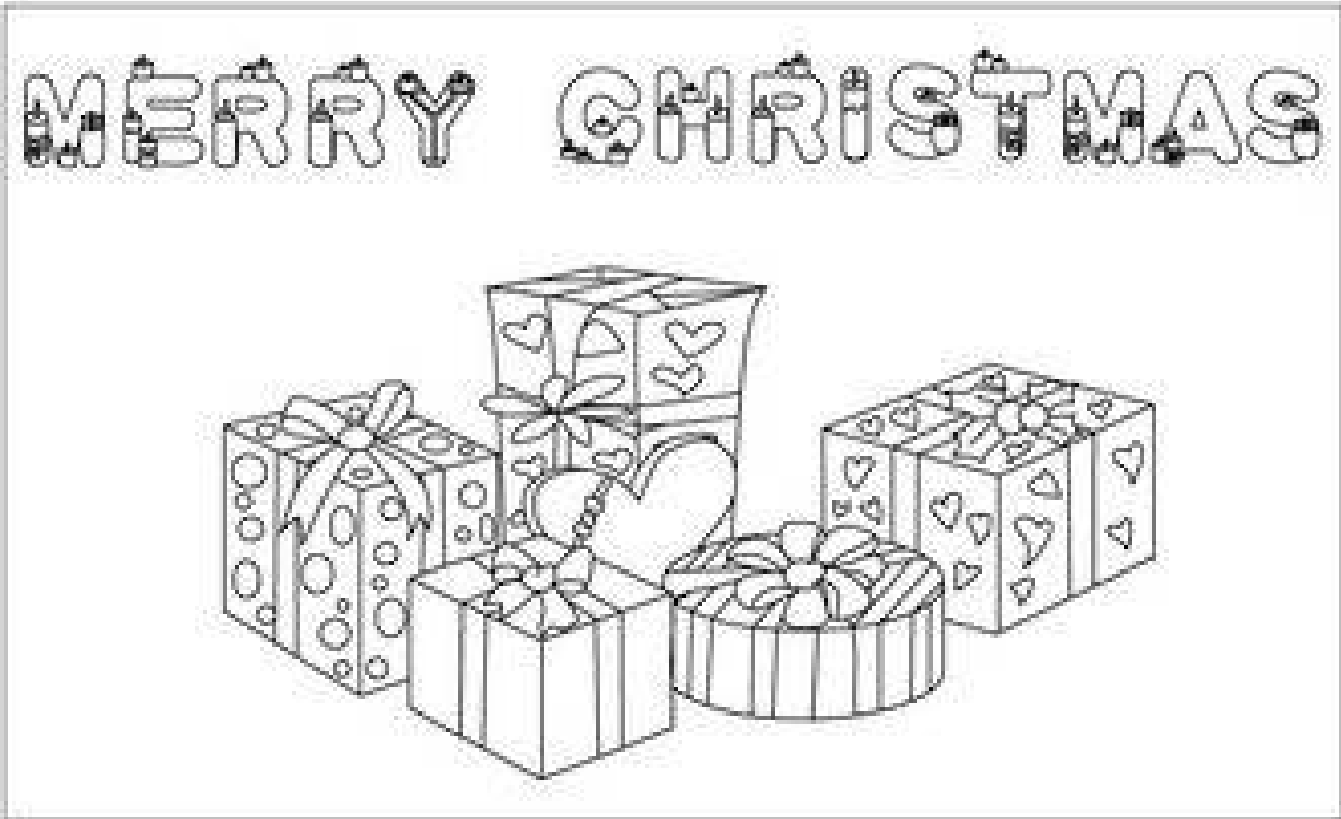


www.kidsactivitydownloads.com

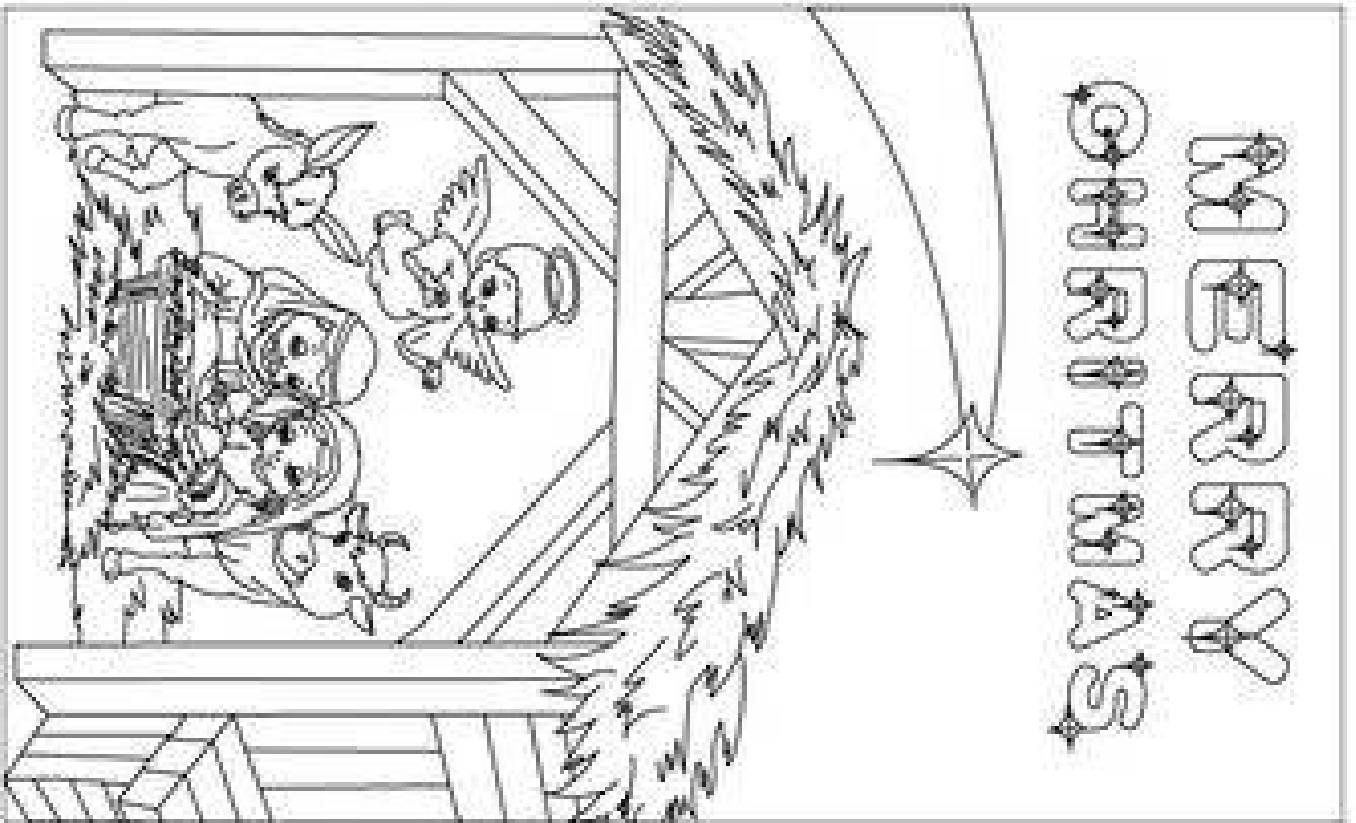
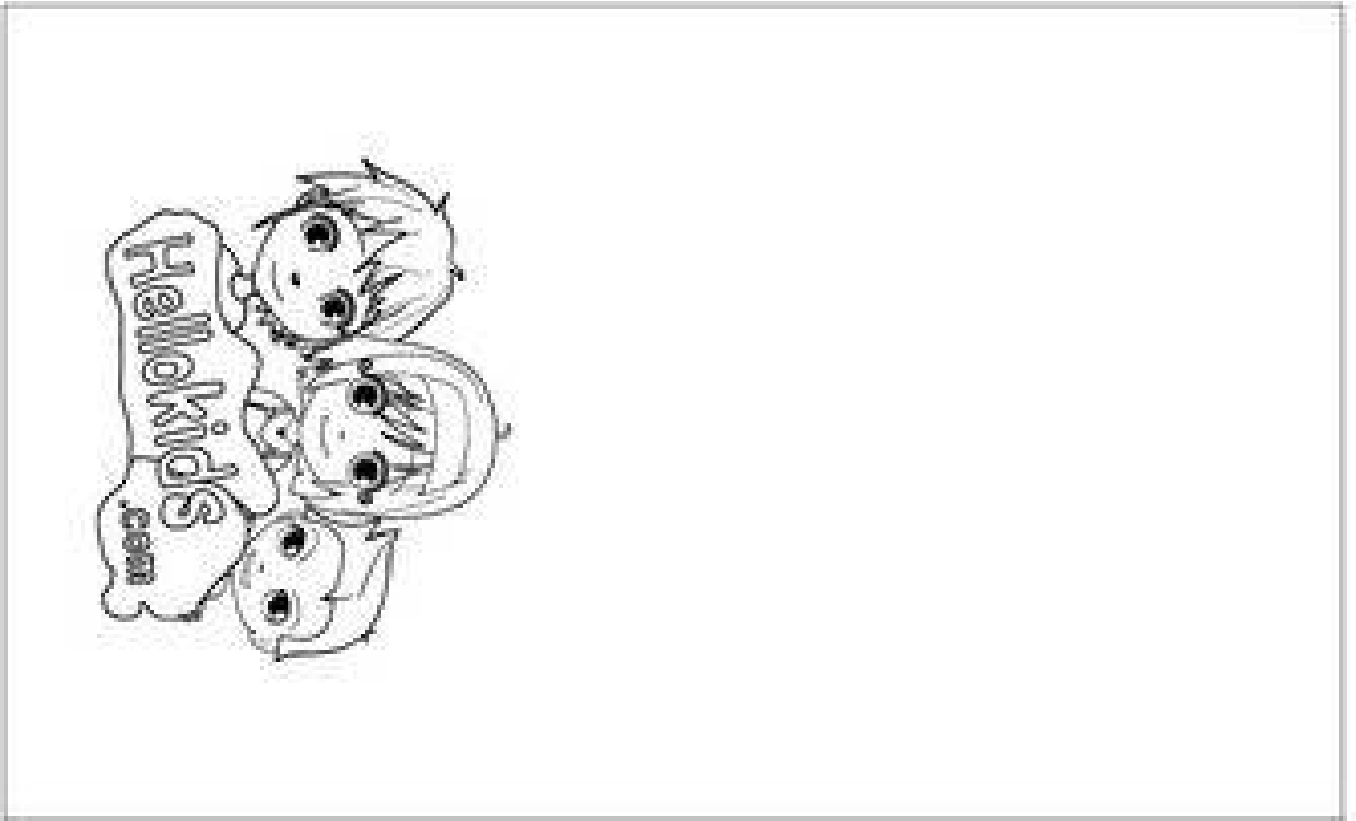
Christmas crafts and cutouts



Kids Activity Downloads



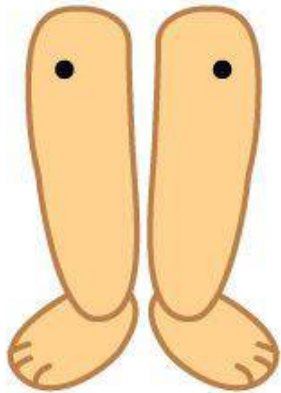
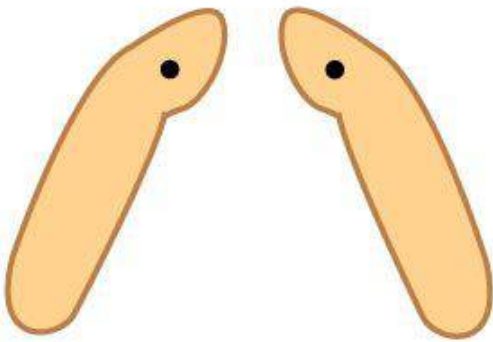
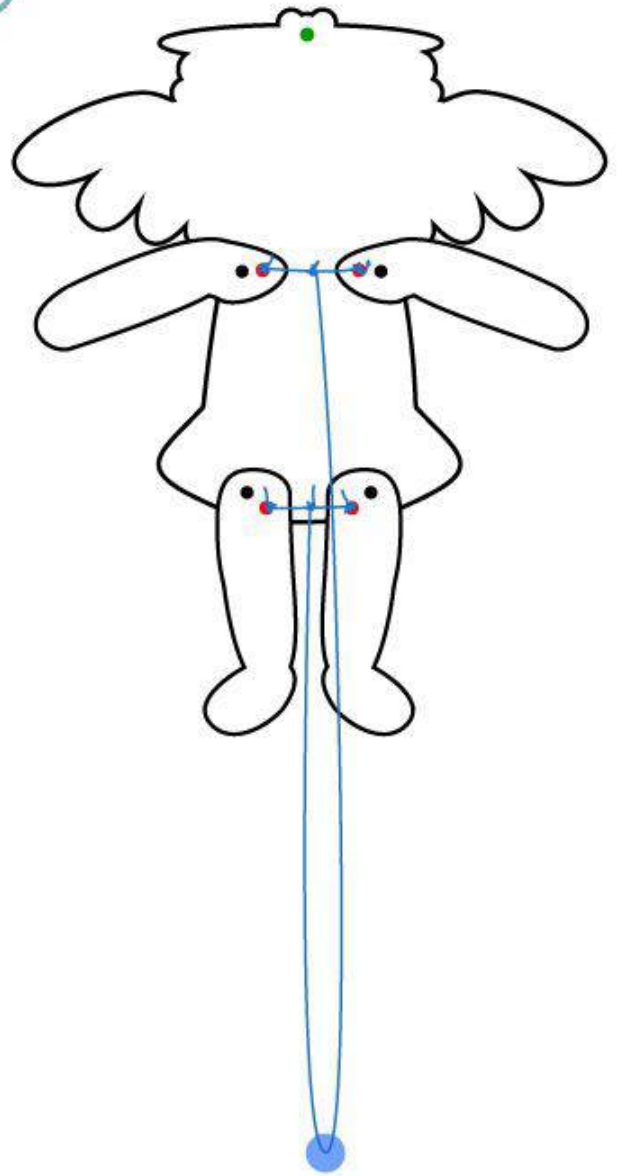




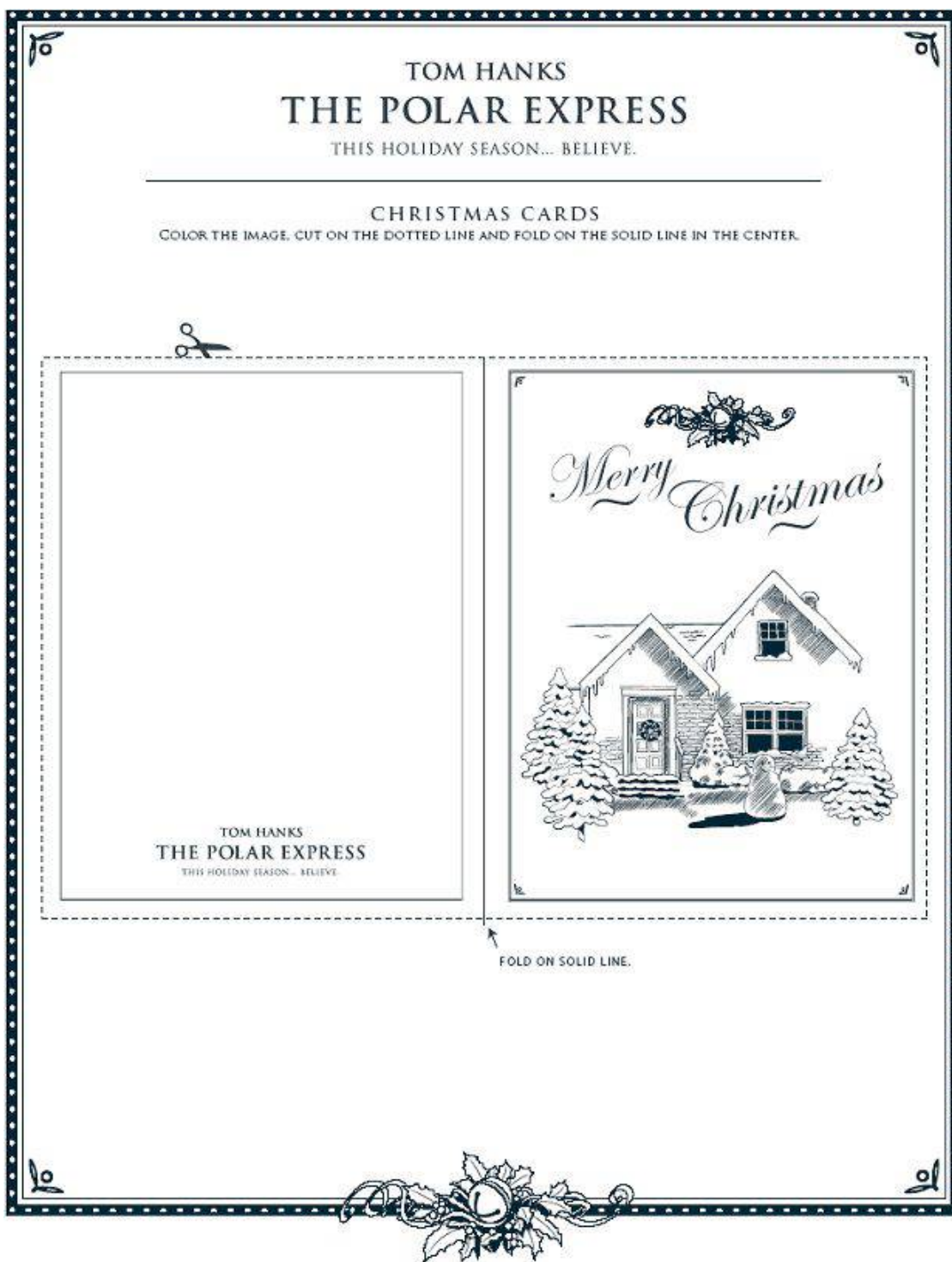


How to create your Christmas Angel puppet craft

1. Gather your supplies: scissors, brads and string.
2. Print the Christmas Gabriel Angel paper puppet on card stock paper.
3. Cut out the Christmas Gabriel Angel design pieces.
4. With small sized brads, poke through the marked holes to put the Christmas Gabriel Angel together.
5. Use the diagram to attach the string to the indicated brads for moving the puppets arms and legs.
6. Once the Christmas Angel is assembled your puppet is ready to play with or punch out a hole near the top of her halo and put a string through to hang as a decoration.



[Back](#)





How to create your Gingerbread Man puppet craft

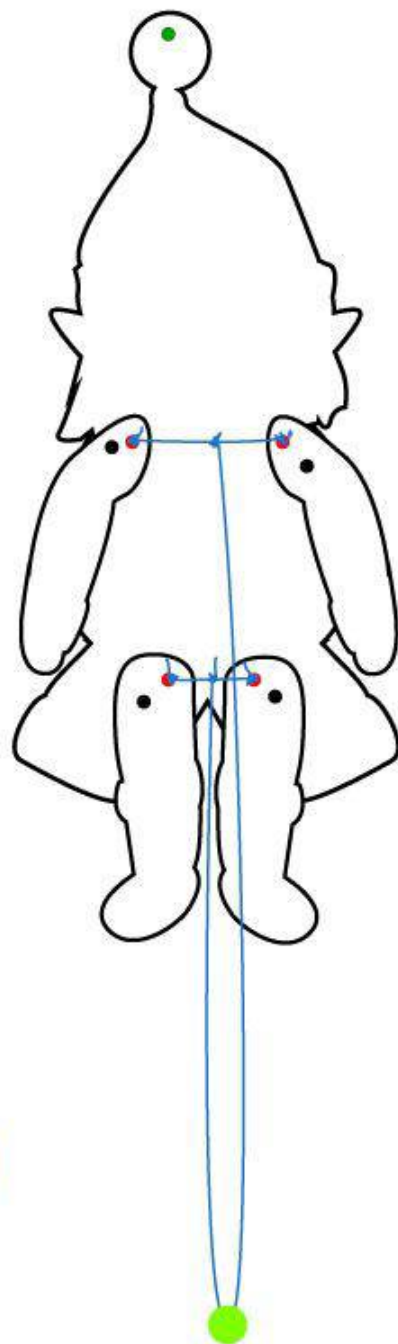
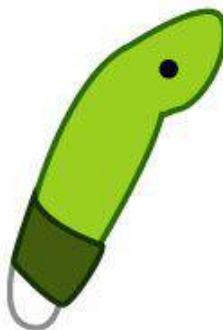
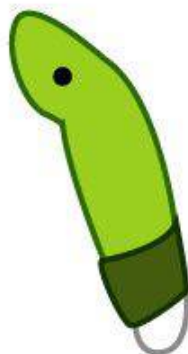
1. Gather your supplies: scissors, brads and string.
2. Print the Santa Claus paper puppet on card stock paper.
3. Cut out the Santa Claus design pieces.
4. With small sized brads, poke through the marked holes to put the Santa Claus together.
5. Use the diagram to attach the string to the indicated brads for moving the puppets arms and legs.
6. Once Santa Claus is assembled your puppet is ready to play with or punch out a hole near the top of his hat and put a string through to hang as a decoration.



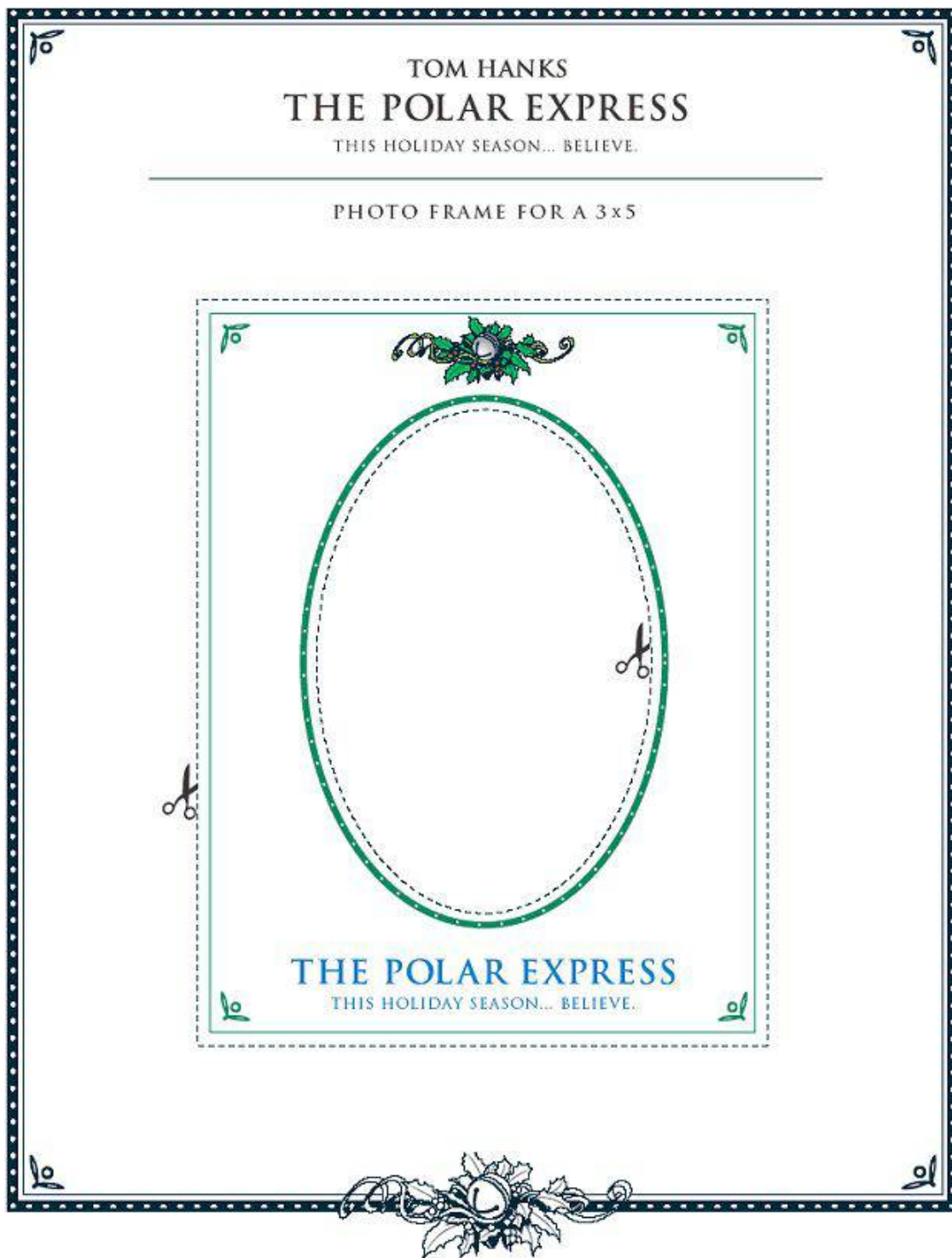


How to create your Christmas Elf puppet craft

1. Gather your supplies: scissors, brads and string.
2. Print the Christmas Elf paper puppet on card stock paper.
3. Cut out the Christmas Elf design pieces.
4. With small sized brads, poke through the marked holes to put the Christmas Elf together.
5. Use the diagram to attach the string to the indicated brads for moving the puppets arms and legs.
6. Once the Christmas Elf is assembled your puppet is ready to play with or punch out a hole near the top of his hat and put a string through to hang as a decoration.



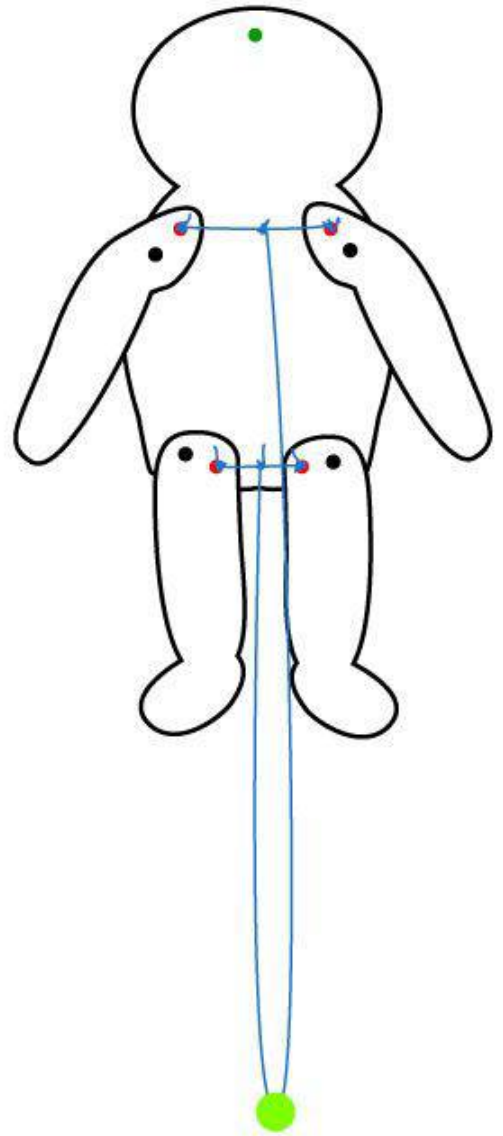
[Back](#)

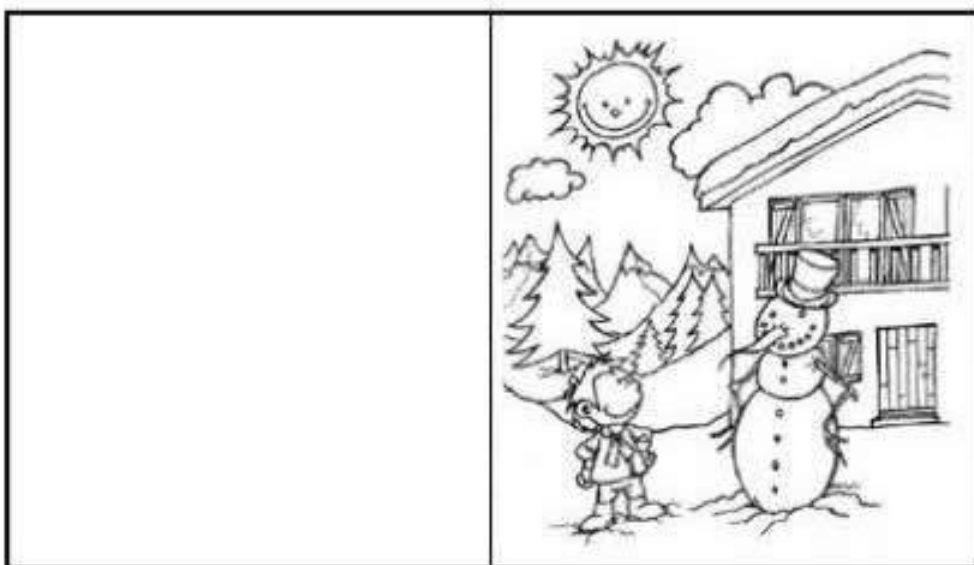
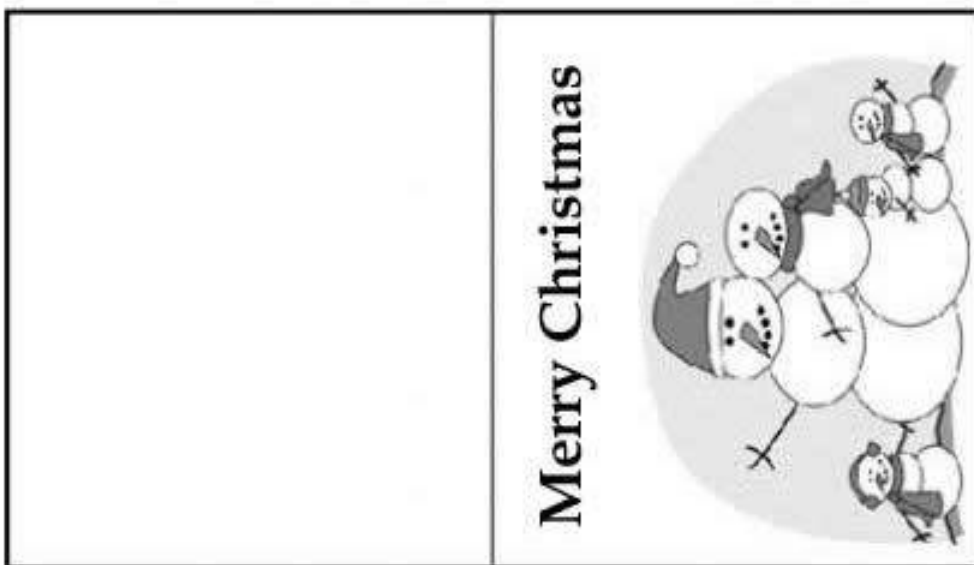
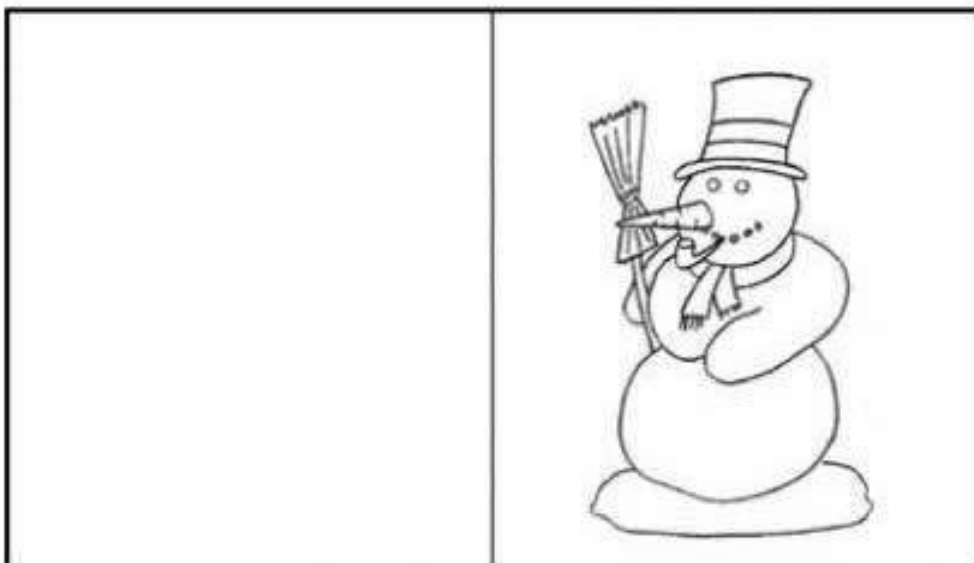


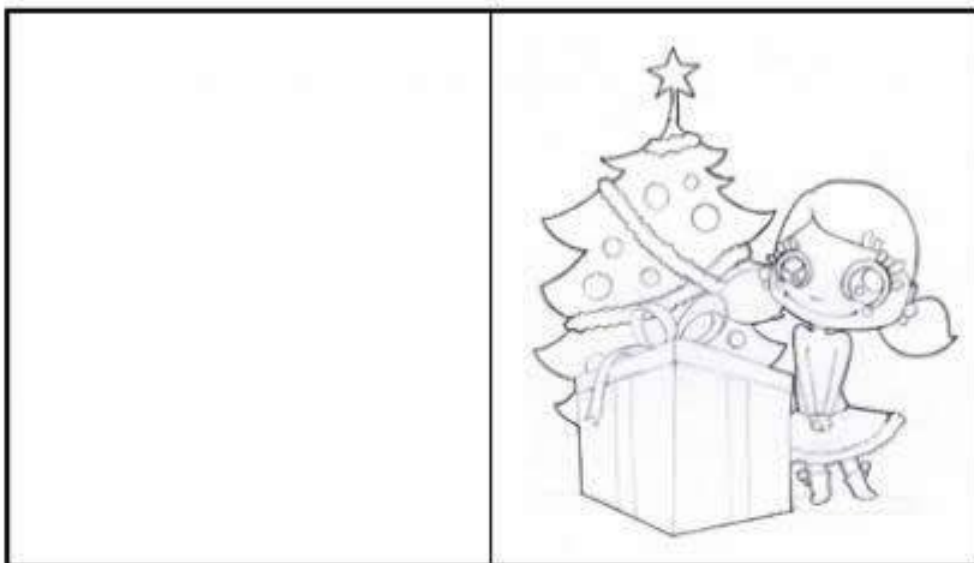
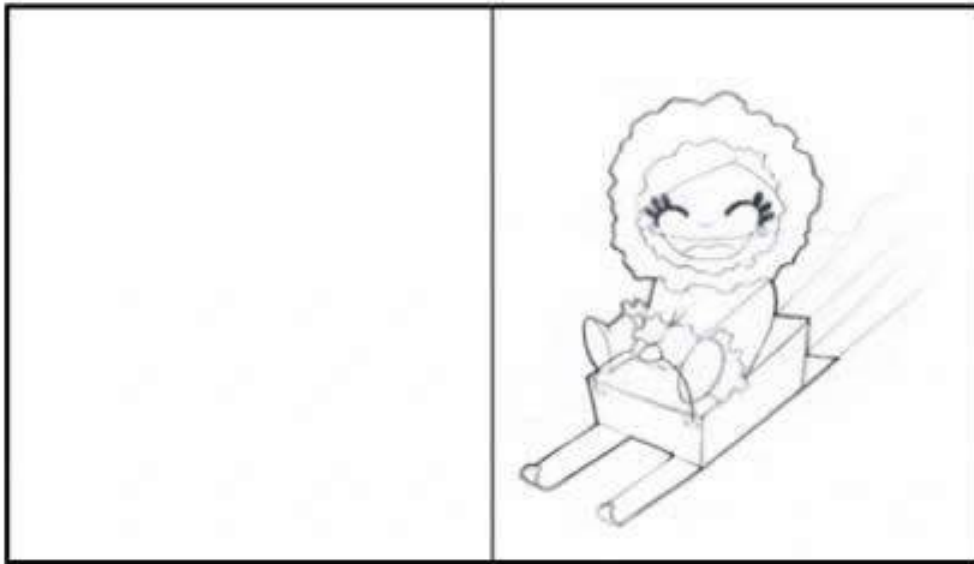


How to create your Gingerbread Man puppet craft

1. Gather your supplies: scissors, brads and string.
2. Print the Gingerbread Man paper puppet on card stock paper.
3. Cut out the Gingerbread Man design pieces.
4. With small sized brads, poke through the marked holes to put the Gingerbread Man together.
5. Use the diagram to attach the string to the indicated brads for moving the puppets arms and legs.
6. Once the Gingerbread Man is assembled your puppet is ready to play with or punch out a hole near the top of his head and put a string through to hang as a decoration.







**Merry
Christmas**



**MERRY
CHRISTMAS**



**Merry
Christmas**



