



United States
Department of
Agriculture

Monarch in the Making



Natural Resources Conservation Service

Helping People Help the Land.

www.nrcs.usda.gov/monarchs

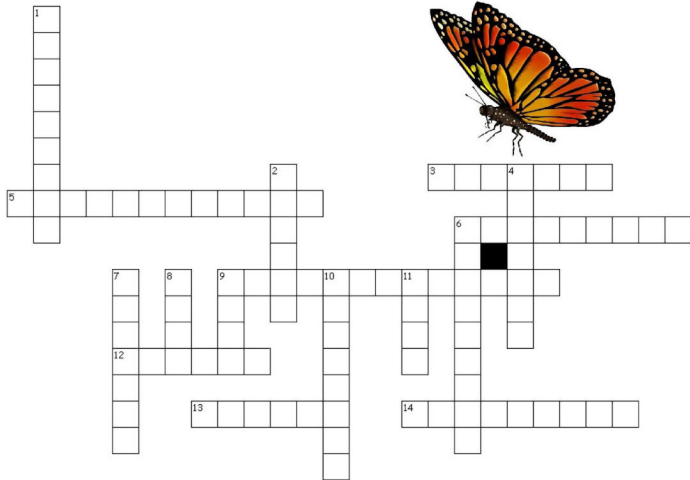
USDA is an equal opportunity provider, employer, and lender.





MONARCH Migration

Did you know that the Monarch butterfly begins its migration every year in September?



DOWN

- The _____ can start early if the weather turns cold earlier in the year.
- Only the _____ generation of Monarchs migrate each year.
- Monarchs begin their migration in North _____.
- Monarchs have a long flexible 'tongue' called a _____.
- Adult Monarchs eat the nectar produced by _____.
- Monarchs go through _____ stages in one life cycle.
- Only _____ Monarchs have a black spot on each of the hind wings.
- Caterpillars eat, and Monarchs lay their eggs on the _____ plant.
- Metamorphosis occurs inside the _____ during the chrysalis, or third, stage of the Monarch life cycle.

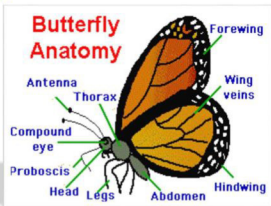
ACROSS

- The _____ is considered the King of all butterflies.
- _____ efforts are trying to help the Monarchs by planting milkweed on protected land.
- Common _____ include frogs, birds, mice, and lizards.
- The process of a caterpillar becoming a butterfly is called _____.
- Monarchs migrate to _____ climates like Mexico and California.
- Monarchs lay eggs which hatch into baby caterpillars, also called _____.
- Monarchs are _____ if eaten.

Word Bank: proboscis, predators, monarch, migration, America, four, milkweed, fourth, metamorphosis, flowers, poisonous, male, warmer, conservation, larvae, pupa



W
O
R
D
S
E
A
R
C
H

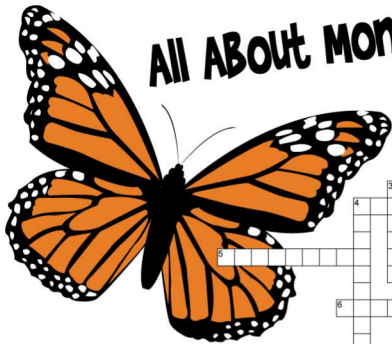


b	d	z	j	e	y	e	y	t	l	v	e	i	n	s
u	z	b	m	g	e	b	z	k	u	d	g	k	m	e
t	d	b	y	u	i	o	a	b	d	o	m	e	n	q
t	q	o	h	i	n	d	w	i	n	g	y	k	t	d
e	p	r	o	b	o	s	c	i	s	t	t	n	m	w
r	t	h	o	r	a	x	c	w	i	n	g	p	g	s
f	c	o	m	p	o	u	n	d	h	e	l	e	g	s
l	m	o	m	m	y	g	f	o	r	e	w	i	n	g
y	i	o	b	a	c	j	a	n	t	e	n	n	a	p
r	j	x	c	a	x	v	f	l	h	e	a	d	p	d

forewing
antenna
abdomen
hindwing
proboscis
compound
thorax
legs
head
eye
veins
wing



All About Monarchs!



Across

- Often called a cocoon, a caterpillar will become a _____ before a butterfly emerges.
- These butterflies help us do this just like honey bees!
- Each butterfly has two!
- The orange, black and white butterfly that's very common across North America.

Down

- It is very exciting to have a _____ land on you.
- The _____ of these butterflies is important.
- Monarch butterflies are known for their distinct black, white and _____ colors and patterns.
- Before a butterfly is a butterfly, it is a _____.



MIGRATING MONARCHS



The Monarch Butterfly migrates into Wisconsin in late spring and early summer. It can take 3 to 4 generations of Monarch Butterflies to make the journey from their overwintering site in Mexico to their summer breeding grounds in the northern United States and Canada. Sometimes large groups of Monarch butterflies can be seen roosting together along the Wisconsin River.

Make a Monarch

Materials: coffee filters, orange and black watercolors with a paintbrush or washable markers, wooden clothespin, black marker

Directions:

1. Paint the coffee filter with orange water colors or color it with washable markers and spray with water to make the colors run. Allow to dry. Each coffee filter will make one butterfly.
2. Once the coffee filter is dry, use a black marker to add details like lines and dots since the coffee filter will be the wings.
3. Pinch the coffee filter in the middle and add the clothespin as the head, thorax and abdomen. You can paint or color the clothespin black if you would like.