

DID YOU KNOW...

Marine life
can become
entangled and killed
in ghost nets, plastic
bands, and other
types of debris?



Worldwide,
more than **200**
species are impacted
by debris entanglement.

www.MarineDebris.noaa.gov

DID YOU KNOW...

Heavy marine debris,
such as derelict
fishing gear, can
crush sensitive
habitats?

In the
Hawaiian Islands,
lost fishing gear
has damaged and
destroyed coral
reefs.

www.MarineDebris.noaa.gov

www.MarineDebris.noaa.gov

DID YOU KNOW...

Animals can
mistakenly eat
marine debris?



Plastic bags are the
most common type of
marine debris eaten
by sea turtles.

www.MarineDebris.noaa.gov

www.MarineDebris.noaa.gov

DID YOU KNOW...

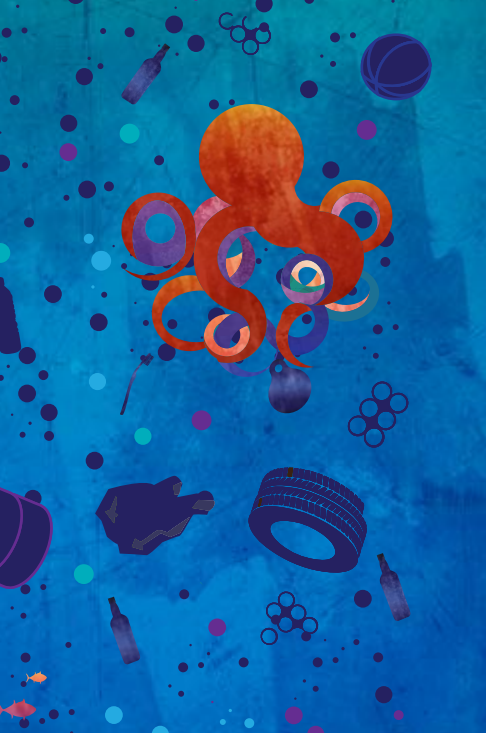
Garbage patches exist in ocean gyres all over the world?

These areas of concentrated marine debris are mostly made of tiny microplastics swirling through the ocean's water column.

www.MarineDebris.noaa.gov

www.MarineDebris.noaa.gov

**TRASH
DOESN'T
BELONG HERE.**



YOU CAN HELP.

www.MarineDebris.noaa.gov



HOW YOU CAN HELP!

GET INVOLVED and participate in local cleanups in your area.

REMEMBER that our land and sea are connected.

DISPOSE OF WASTE PROPERLY no matter where you are.

REDUCE the amount of waste you produce.

REUSE items when you can. Choose reusable items over disposable ones.

RECYCLE as much as possible! Bottles, cans, cell phones, ink cartridges, and many other items can be recycled.

Facebook:
/NOAAMarineDebris

Instagram and Twitter:
@NOAADebris

www.MarineDebris.noaa.gov

