

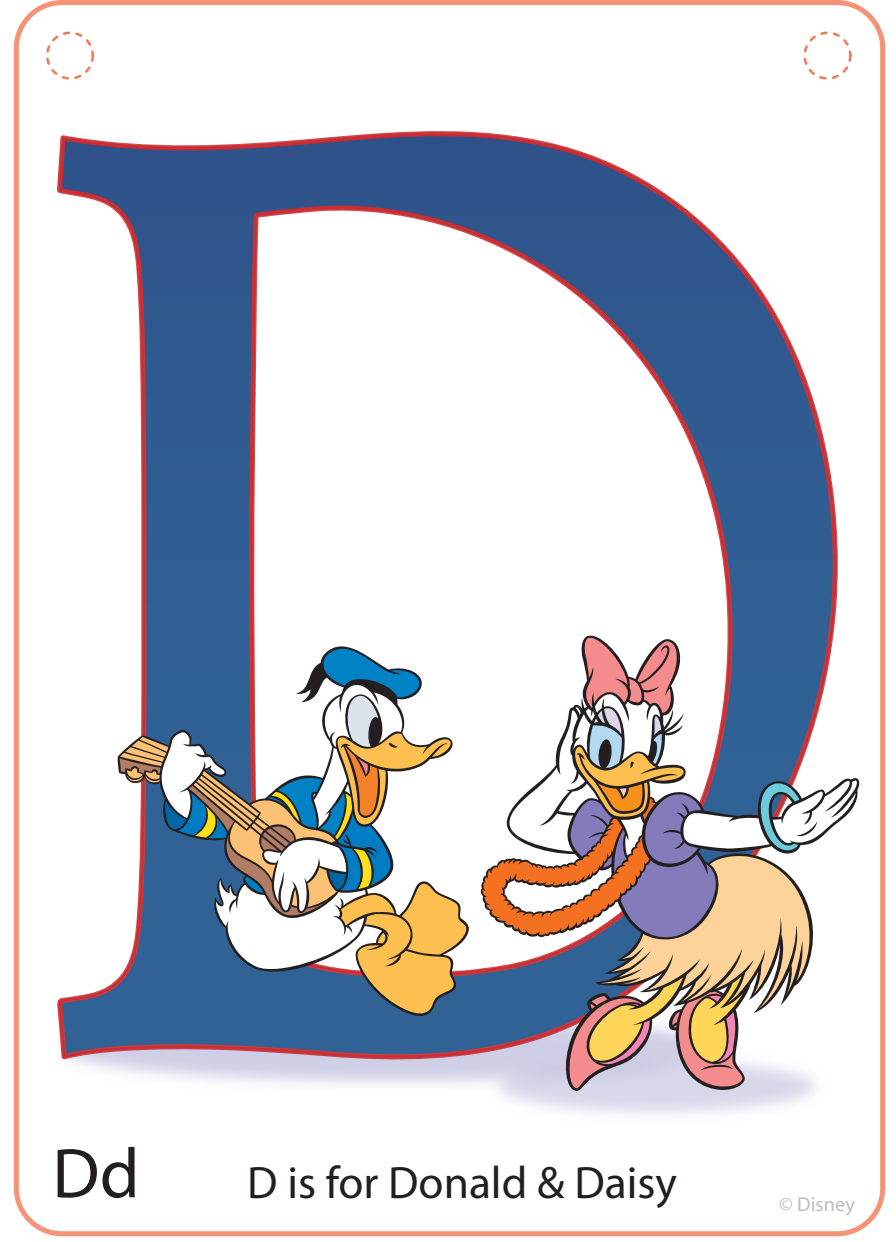




Cc

C is for Cinderella

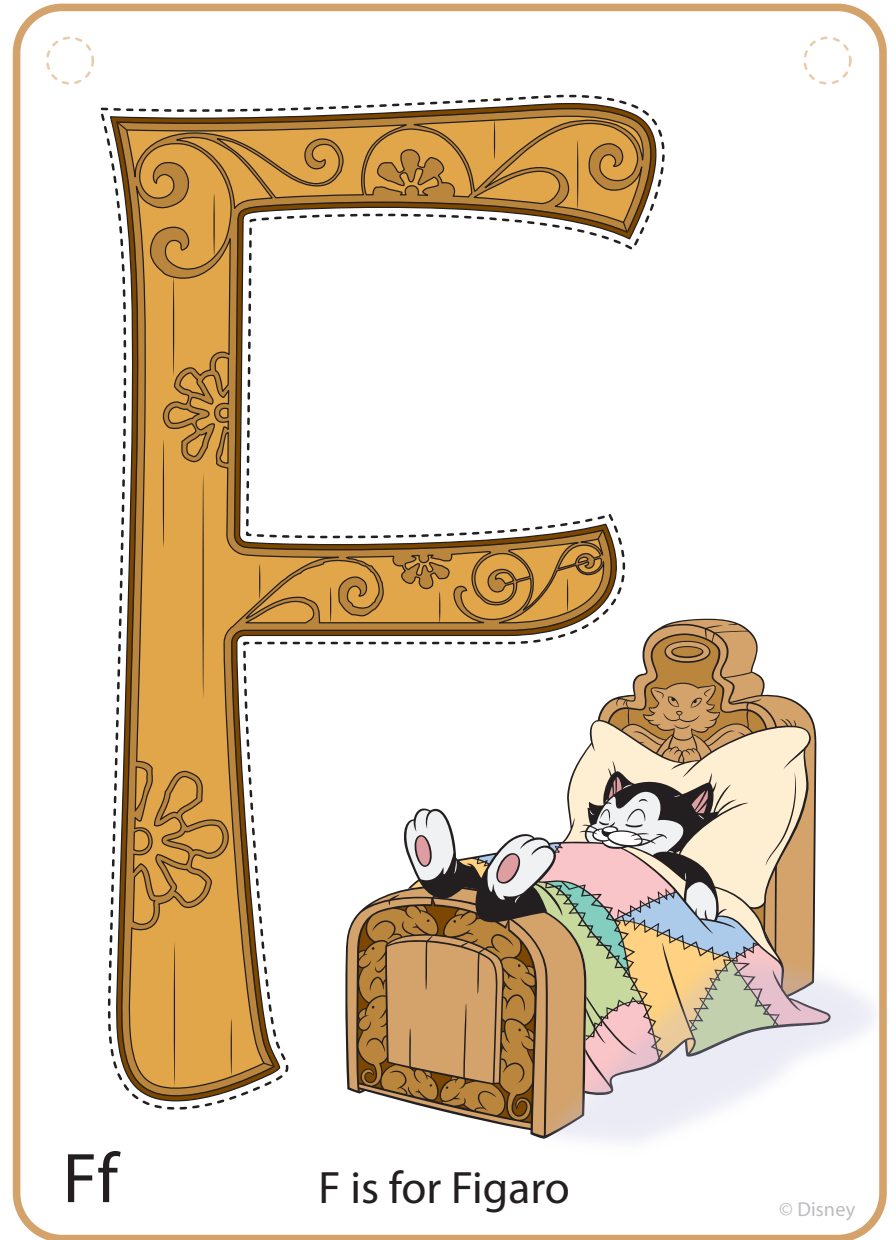
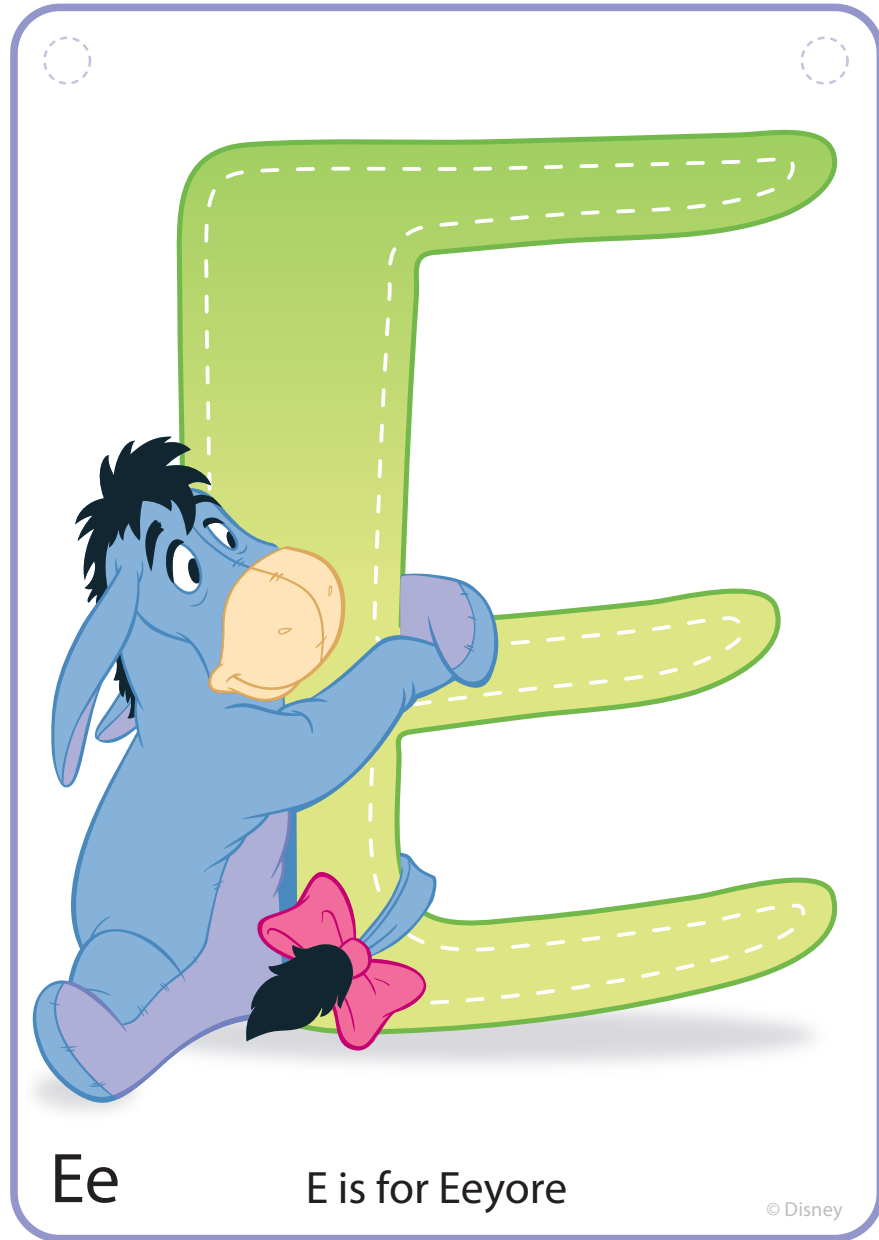
© Disney

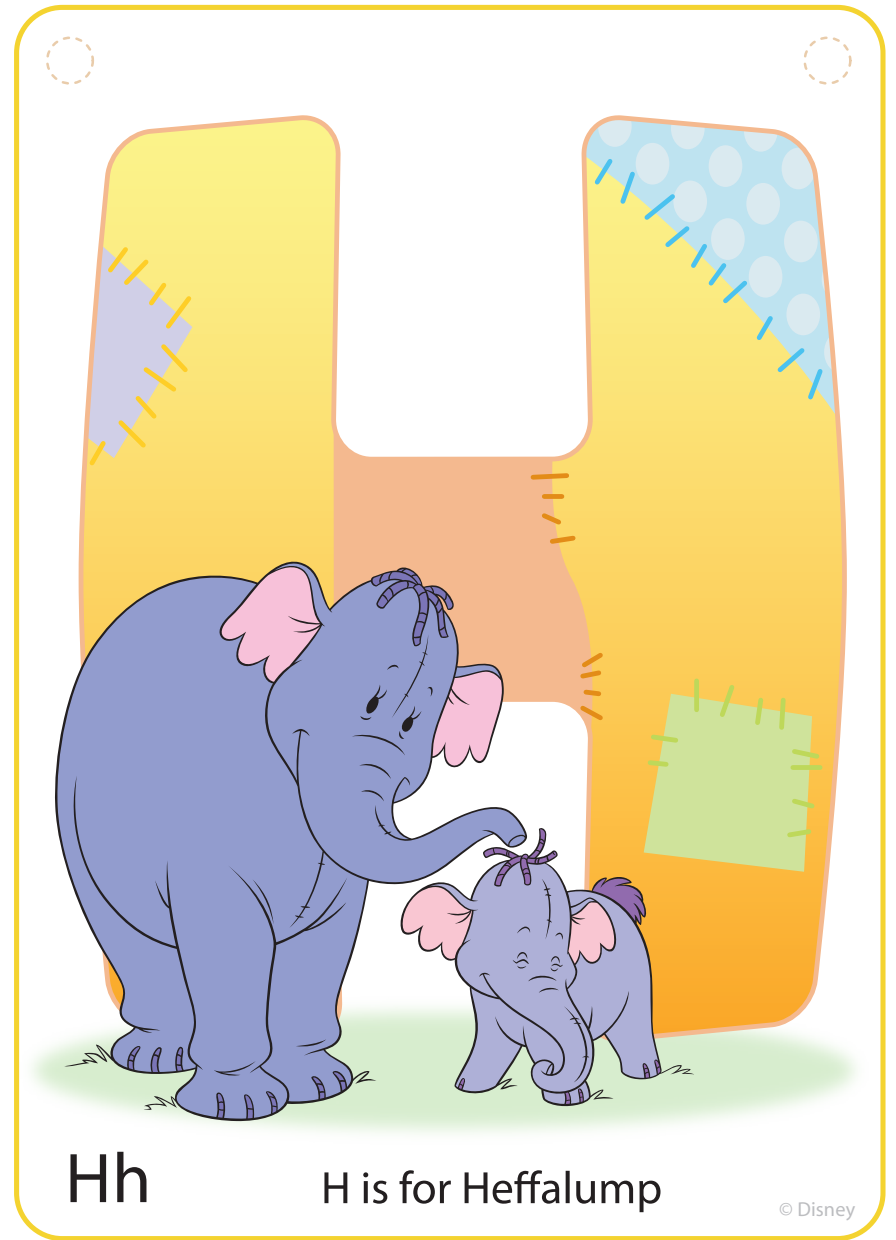


Dd

D is for Donald & Daisy

© Disney







Ii

I is for Incredible!

© Disney · PIXAR



Jj

J is for Jasmine

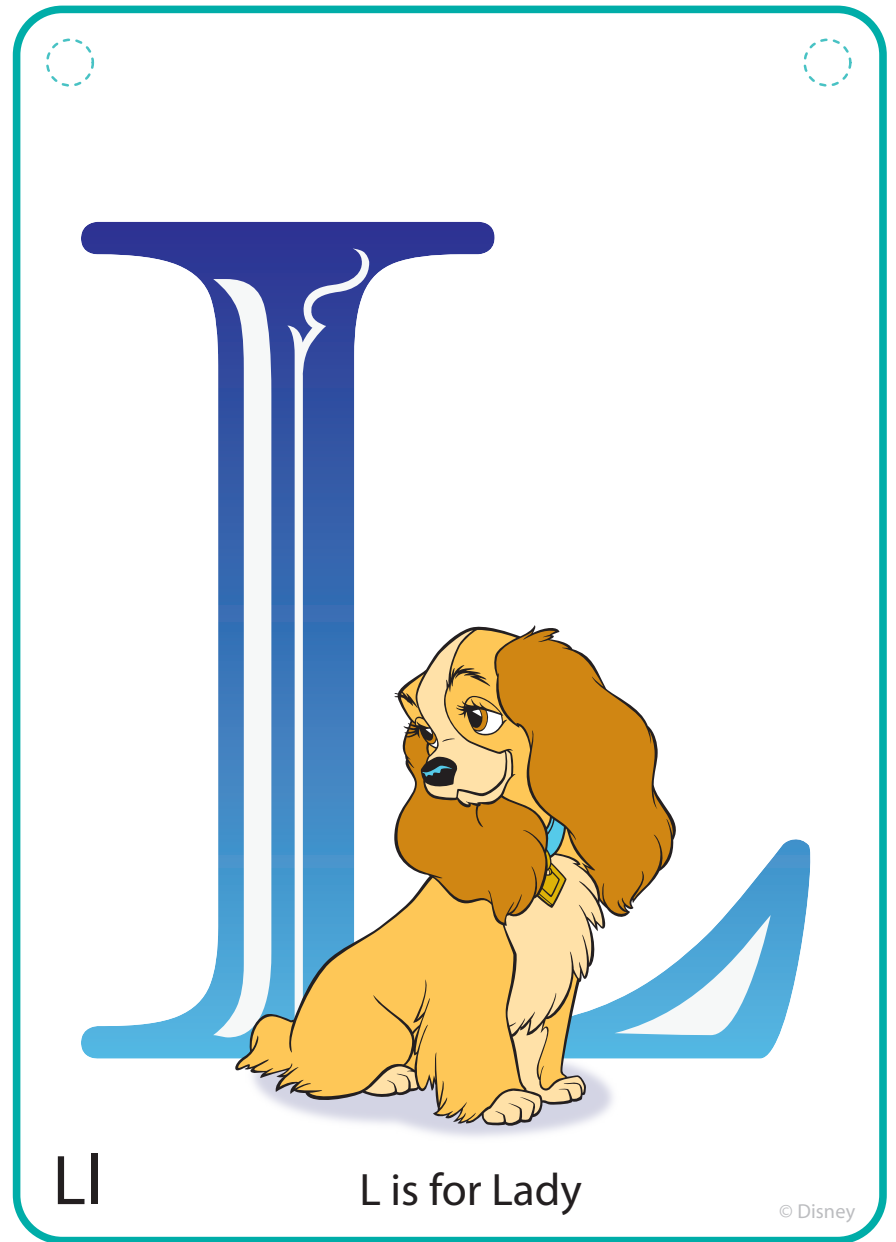
© Disney



Kk

K is for Kronk

© Disney



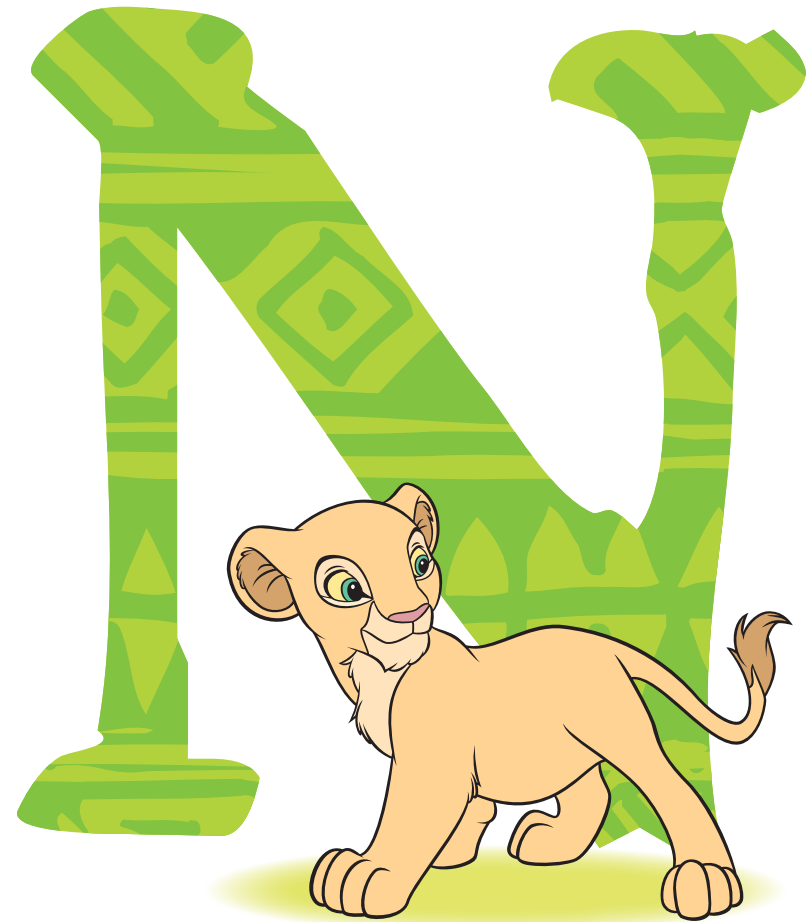
Ll

L is for Lady

© Disney



Mm M is for Mickey & Minnie



Nn N is for Nala

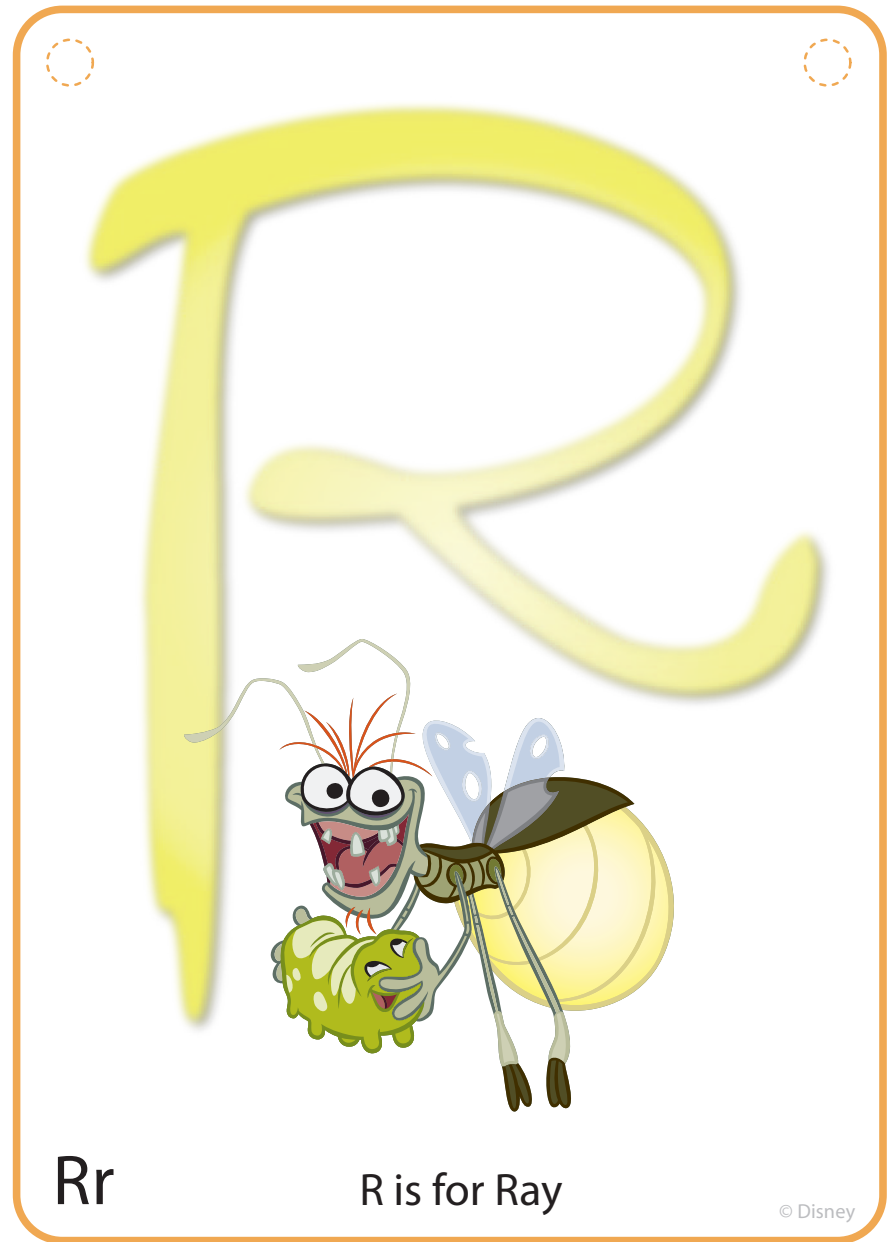




Qq

Q is for Queen

© Disney



Rr

R is for Ray

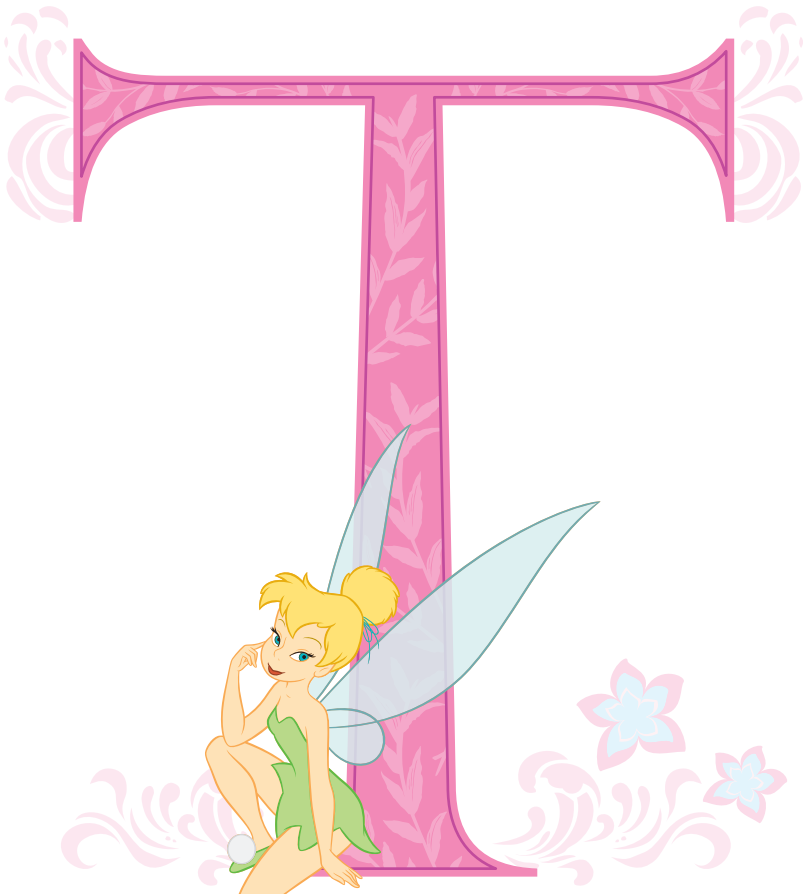
© Disney



Ss S is for Stitch

© Disney

A large, stylized letter 'S' with a green and blue floral pattern. A blue cartoon character, Stitch, is surfing on a white surfboard with a red and blue stripe, riding a blue wave. The card has a blue border and two dashed circles in the top corners.



Tt T is for Tinker Bell

© Disney

A large, stylized letter 'T' with a pink and white floral pattern. A yellow fairy with green wings and a green dress, Tinker Bell, is sitting on the base of the letter. The card has a pink border and two dashed circles in the top corners.



Uu

U is for Ursula

© Disney



Vv

V is for Violet

© Disney · PIXAR



Ww W is for Winnie the Pooh © Disney



Xx X is for Xylophone © Disney · PIXAR

